



Australian Fellowship of Evangelical Students

Affiliate Annual Campus Reports

2024





NTE2024 In the Regions  
- ACT & Regional NSW

10 Aug, 11:59pm, Fri

EARLY BIRD REGOS

**CLOSE TOMORROW**

Blink & you'll miss it. 🐱

**CONFRONTING CHRISTIANITY**

UniSO CHRISTIAN STUDENTS

**EQUIP**  
MONDAY 5:30PM @ 53 DEBRA ST



INTER-SOCIETY DEBATE

ISLAMIC AWARENESS WEEK 2024

**ISLAM VS CHRISTIANITY**

SALVATION & REDEMPTION

Abdullah Kunde Samuel Green



DIG INTO GOD'S WORD BEFORE EXAMS HIT

**COLOSSIANS BIBLE TALK**

Week 11-13

QUT CHRISTIANS



**MEET JESUS**

at MURDOCH CHRISTIANS UNITED MCU



**UNISTARTERS**

FRIDAY 25TH FEBRUARY 10:30AM-1:30PM \$10 FOR LUNCH ROOM 67.104

UNI BIBLE GROUP UNICLUBS

**JOIN US AT**  
campusBiblestudy

Special of the Day:  
Toasted Sandwiches  
+ ask about  
**JESUS**

MEET JESUS    GROW TOGETHER  
MAKE FRIENDS    SERVE GOD

ALL WELCOME!

comusbiblestudy.org/connect

FOCUS Session 9  
**God's Guidance Worked**  
Choosing a Church

Do my decisions glorify God?

Do my decisions glorify me?

focus    RUSU CLUB    afes    RUSU CHRISTIAN UNION

**Healthy Relationships**  
a life-giving discussion on loving one another

Friday Aug 2, 7:00pm – 8:30pm  
Inveresk Library, Room 216

Register Now!

MEET JESUS    University Fellowship / Christians

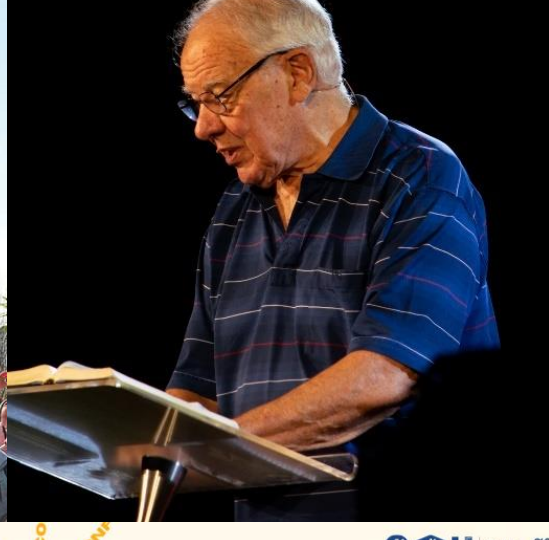


Heading to Uni in 2024?

**COMMENCEMENT CAMP**

14 - 16 February, 2024

es.org.au



**Lysterfield Lake**

22 OCTOBER  
11AM - 3PM

COME ALONG FOR A SHORT HIKE, KANGAROOS & BBQ LUNCH

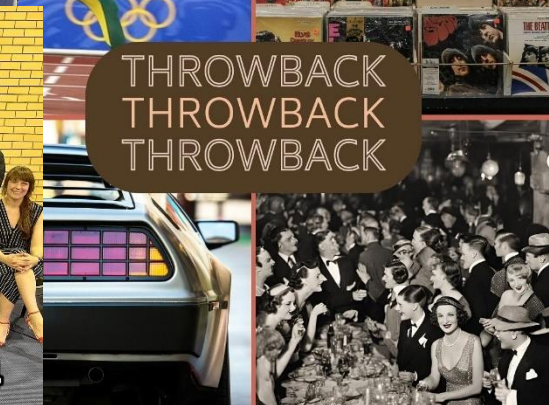
Christians United  
**Text for a Toastie**

Friday 13th of September | 5:00 - 8:30 pm  
Saturday 14th of September | 10:00 am - 2:00pm

GCU WEDNESDAY PRESENTS  
**UNCONFORM**  
escaping the cults of conformity



**Harvest Celebration 2024**



## NSW / ACT

Australian Catholic University (Canberra) - Canberra Christian Society  
Australian Catholic University (North Sydney) - Evangelicals on Campus  
Australian Catholic University (Strathfield) - Evangelicals on Campus  
Australian Defence Force Academy (UNSW) - FOCUS Military Ministry  
The Australian National University - Fellowship of Christian University Students  
Charles Sturt University (Albury-Wodonga) - Uni Bible Study  
Charles Sturt University (Bathurst) - Bathurst Christian Students  
Charles Sturt University (Orange) - Orange Christian Students  
Charles Sturt University (Wagga Wagga) - Christian Fellowship  
Charles Sturt University, UNSW, The University of Newcastle (Port Macquarie) - Port Macquarie Christian Students  
Macquarie University - Christian Union  
University of Canberra - Fellowship of Christian University Students  
The University of New England - Christians United  
University of New South Wales - Christian Union  
The University of Newcastle - Newcastle Christian Students  
The University of Sydney - Sydney University Evangelical Union  
University of Technology Sydney - Credo  
University of Wollongong - Uni Bible Group  
Western Sydney University (Bankstown & Liverpool) - Campus Bible Ministries  
Western Sydney University (Campbelltown) - Campus Bible Ministries  
Western Sydney University (Parramatta) - Campus Bible Ministries  
Western Sydney University (Penrith) - Campus Bible Ministries

## SA / NT

Charles Darwin University - CDU Christians  
Flinders University - Flinders Evangelical Students  
The University of Adelaide - FOCUS Adelaide  
The University of Adelaide (North Terrace) - North Terrace Evangelical Students  
University of South Australia (City East & City West) - Evangelical Students  
University of South Australia (Magill) - Magill Evangelical Students  
University of South Australia (Mawson Lakes) - Evangelical Students Mawson Lakes



## QLD

Bond University - Bond Christian Students  
 Griffith University (Brisbane) - Griffith Christian Students  
 Griffith University (Gold Coast) - Griffith Christian Students  
 James Cook University (Cairns) - Christian Students JCU Cairns  
 James Cook University (Townsville) - Christian Students JCU Townsville  
 Queensland University of Technology - QUT Christians  
 The University of Queensland - Evangelical Students  
 University of Southern Queensland - USQ Christian Students  
 University of Sunshine Coast - Sunshine Coast Christian Students

## TAS

University of Tasmania - University Fellowship of Christians FOCUS  
 University of Tasmania (Hobart) - University Fellowship of Christians  
 University of Tasmania (Launceston) - University Fellowship of Christians

## VIC

Australian Catholic University (Melbourne) - Christians on Campus  
 Deakin University (Burwood) - Christian Union  
 Deakin University (Geelong) - Christian Union  
 Deakin University (Warrnambool) - Christian Union  
 Federation University - Christian Union  
 La Trobe University (Bendigo) - Christian Union  
 La Trobe University (Bundoora) - Christian Union  
 Monash University (Caulfield) - Christian Union  
 Monash University (Clayton) - Christian Union  
 Monash University (Parkville) - Christian Union  
 RMIT University - Christian Union  
 Swinburne University of Technology - Christian Union  
 The University of Melbourne - Christian Union  
 The University of Melbourne - Graduate Students - Graduates Christian Union  
 Victoria University - Christian Union

## WA

Curtin University - Curtin Christian Union  
 Edith Cowan University (Joondalup) - The Gospel Stand  
 Edith Cowan University (Mt Lawley) - Christian Union  
 Murdoch University - Murdoch Christians United  
 The University of Notre Dame (Fremantle) - Notre Dame Bible Fellowship  
 The University of Western Australia - UWA Christian Union



**Conferences / Events**

List 3 strategically important reoccurring or one-off conferences / events you run for your campus group.

Event Name	Why this event is important to your campus group
Open Day	Running a stall at the universities open day allows for outreach to new students. We are able to introduce ourselves, what we believe and invite students to meet Jesus.
Small groups	Small groups allow our group to meet during the week to read the bible and pray together. This has helped people in the group for friendships so we can support each other in both our university lives but also our walk as christians.
Socials	We have been able to run some socials off campus which has been a great opportunity for the group to get to know one another and further build our relationship as brothers and sisters in Christ as well as giving us more room to build each other up in Christ.
MYC/AnCon Attendance	At Focal Point there were 4 full-time attendees and 1 part-time attendee from ACU

**About your Campus**

As we think about the AFES mission in terms of evangelise, encourage, train and send, write one or two sentences about the strengths, weaknesses and opportunities of each of these areas.



**Strengths, Weaknesses and Opportunities:**

<b>Evangelise</b>	Through open days and having small groups on campus we are able to make ourselves known on campus and spread a little bit about the gospel and what we believe. Although ACU does not have a big in person campus presence it can be difficult to reach out to fellow students during breaks.
<b>Encourage</b>	As a smaller group, we have the opportunity to connect with one another and encourage each other on a more personal level. We would like to see a deeper connection form within our group to aid in the general encouragement of everyone but have seen a steady rise in our connection and hence encouragement.
<b>Train</b>	We incorporate training into our weekly small groups. This allows us to see more students trained from week to week. However, we would like to see more depth in training happen.
<b>Send</b>	We aim to apply what we learn from the bible each week in not just our present situation but also our vocationally specific future situations. It is encouraging to see some graduates actively thinking about vocational ministry. However, we don't have many students attend the annual vocational ministry conference (regional).

**What are the main ways your group evangelise on campus?**

As a group we are able to run stalls at open day and market day, giving us an opportunity to introduce ourselves and provide us with a presence on campus. We also run small groups at the campus cafe as a means to provide a space where people can freely join and read the bible with us as a group. From our small groups we encourage members to have conversations with others in our classes to both spread the word and invite people to come along to small groups so they can have the opportunity to learn about God

**As a group, what are you finding tough?**

Since our campus is quite small and very practical based meaning students are off campus a fair amount, it is difficult for the group to meet all together. This has made it hard for members to properly connect with other students in the group but we are striving to create a more connected feeling within the group. The smaller numbers has also proven to make it difficult as running events and taking ownership of the group has put more pressure on committee members instead of being able to share the load with a larger group of students.

**If known, what are some your plans for 2025?**

Some plans that we are focusing on for 2025 is to create a new, more informal, community feel for the group as well as welcome new members. We will also strive to uphold our weekly small groups as well as continue to attend yearly AFES events/camps.

**How does your group use AFES *PrayerNet* to pray for other groups?**

The use of AFES PrayerNet has not been a focal point this year but it is a goal of ours to incorporate it more in our small groups in the new year. This will mean that we can look outwards and to our brothers and sisters at other campuses, praying for the

**How can we pray for you?**

Thank God for the willingness of new committee members as they have stepped up into the new roles and pray that God will use them to help achieve His goals for our group. Pray that our group will always be focusing on Christ and glorifying Him through our presence on campus.

Pray for a more connected feel for the group where all members are able and willing to help grow the group as well as provide a safe space for people to feel comfortable to ask questions and reach out.

**Conferences / Events**

List 3 strategically important reoccurring or one-off conferences / events you run for your campus group.

Event Name	Why this event is important to your campus group
Growth Groups	Growth groups are our weekly bible studies that run at different times throughout the week letting students gather together in small groups to read and understand God's word and praying together. This is important for us at EOC as we want the students to be engaged with God's word to know him more, deepening their relationships with him as well as building fellowship with one another and depending on God through prayer in all things.
Cross Training	Cross training is times during the week where students are more intensely trained up in areas of the Christian faith. These times of training are important as they help equip students with the skills they need to share and stand up for the Gospel, knowing different ways to share the Gospel to different groups of people as well as unpacking the truths of the Gospel and what they actually mean and why its important to stand firm in those truths and why its important to teach those truths to one another.
E-Week	E-Week is our week of heightened evangelism on campus where we have a specific to ask student on campus with the hopes of sharing the Gospel with them. We have this week once a semester and it is important as it gives us time to focus on evangelism to the uni when it can get busy during the semester as well as providing more open events during the week to invite non-christians to that are more targeted to newcomers that other potential weeks.
MYC/AnCon Attendance	35

**About your Campus**

As we think about the AFES mission in terms of evangelise, encourage, train and send, write one or two sentences about the strengths, weaknesses and opportunities of each of these areas.



## Strengths, Weaknesses and Opportunities:

---

- Evangelise** Evangelism on campus at ACU has happened in many different ways this year. We have continued with our regular E-weeks each semester, a week of focused heightened evangelism walking up to students on campus asking them questions and sharing the gospel with them as well as having a larger event that week to invite them to hear more of the gospel. We also have an evangelism goal this year of praying for 2 non christian friends for 2 minutes each and to read uncover John with a friend. This goal has really helped us keep evangelism on our minds and has resulted in many students reading uncover John in triplets together. The Meet Jesus rally's were also a great opportunity for EOC students to evangelise to their friends with lots bring some along to hear the gospel some even for the first time. We also got each growth group in semester 2 to run their own evangelistic picnic at some point during the semester. It was a great inform opportunity for friends to come along see the community and culture of EOC and hear a testimony of how Jesus has worked in some of the students lives. Some challenges we faced in evangelising this year was being prepared for our E-week, with lots of training and prep for it and not much time to get it done it left some people feeling unprepared but most students still gave walk-up a crack anyway. Another struggle we faced was getting people to come along to our events with people inviting friends and them having them pullout last minute. An exciting opportunity for us at North Sydney is their is a large number on international students who around on campus and open to hearing and learning about Jesus. We run a cultural exchanged event where we heard about their cultures and shared parts of the Australian and christian culture which ended up being a great success and will be an area we continue to focus on in evangelism.
- 
- Encourage** As we think about how we encourage one another at EOC it can look very different. One way is through the increase number of students who have stepped up to serve in different capacities. We have many different teams now at EOC for different ministries which is super encouraging to see students step up and serve one another in those ways showing an increase in initiative. We have also been encouraged and growing through God's word this year in both our common hour and growth groups reading through John, some Psalm's and Galatians going back to God's grace and what that means for us. We have also had a focus on growing the prayer culture which has been encouraging to see people get on board with that sharing things to be praying for, gospel conversations that they have had. The space and culture of prayer is something we want to keep growing at EOC, depending on God through prayer in all things, encouraging one another in prayer.
- 
- Train** Training at EOC most clearly looks like our dedicated times of training called Cross Training where students will be trained up in an area of the christian life which could include evangelism, leading a growth group, christian doctrines and more over the course of a semester. Students however are also trained up through regularly attending growth groups and our common hour hearing and understanding God's word more deeply. Those students who are placed in leadership positions also do 1 on 1 catch ups with staff workers to be further trained up, prepared and ready to teach others about God's word. An area for improvement within the space of training is for more students to engage with it, out of all the ministries we run our training times see the least numbers and we want to keep encouraging the members of EOC to see the value of being train up. In light of this an opportunity for growth is next year we hope to start a new model for how we do training, running it at a new time, having hot topic training as well as a strand like program and dinner together to really grow the culture at EOC to want to be trained up.
- 
- Send** At EOC we prepare to send off students in different ways. Through general training during their time at EOC students are prepared with the skills to understand God's word better and feel more equipped to share it. Then as students come to finishing their degrees we run events call Cross Minded helping students to be cross minded as they go off into the workforce, really considering what it looks like to be a Christian in their work or even considering full time ministry. We also encourage those in their final year to attend MTS Recruit as another way to really consider ministry work and be more prepared and equipped for living life as a christian each day, making the most of every opportunity to be trained up and sent.
-

**What are the main ways your group evangelise on campus?**

We hold an E-week, a week of heightened evangelism focused on reaching students on campus through stalls and walk up asking a question for the week to prompt gospel conversations. We also run training throughout the week focused on evangelism and training students in how to share the gospel. Our evangelism goal also helps us to continue thinking about evangelism as we have been praying for 2 non-christian friends for 2 minutes each day and to read uncover John with a friend.

**As a group, what are you finding tough?**

Some challenges we are facing as a group are as we have been blessed with growth over the last couple years we want to be cautious of making sure the group doesn't become closed off and not welcoming for new people. The times of our events can restrict the friends that come along when most of our things are on Wednesdays if friends are around for those times on Wednesday it can be tough to invite them along. Getting people on board with the importance of prayer that we have pushed this year has been slightly challenging with small numbers attending the new prayer meetings we have been running.

**If known, what are some your plans for 2025?**

We are planning to shift our training times to create more fellowship and deeper time being train up. There will be a combined train topic for everyone and then training strands that you will move through and then having dinner together.

**How does your group use AFES PrayerNet to pray for other groups?**

Included in weekly prayer points and prayer at our common hour

**How can we pray for you?**

Continued growth, sustaining the ministry with staff between 2 campuses and students taking more leadership and initiative, engagement with new training program

### Conferences / Events

List 3 strategically important reoccurring or one-off conferences / events you run for your campus group.

Event Name	Why this event is important to your campus group
Orientation Day	Orientation is a fantastic time each year as we get to invite new and returning students into our group, grow our group presence and get excited for the events coming up this year. With most students at orientation entering their first year of university, our stall allows us to engage empathetically with their hopes and worries for the coming year, and also to be able to share how fruitful EOC can be. It also is a great time to invite people to join as they look for points of connection at university, but also encourages students to look deeper and consider exploring things they haven't previously - such as Christianity for the first time, or understanding it with a new point of view. This time also helps our existing members to be trained up to share the news of Jesus with people who come to our stall, but also around campus.
Easter Event	This is a vital event for our annual EOC calendar as we are able to share the good news of Jesus across campus with hot cross buns and easter eggs. It is one of our main events each year as we embrace sharing the joy found in the resurrection with people from all backgrounds, especially our Catholic brothers and sisters. As Easter is a time that encourages people to think about faith, we believe serving on campus at this time is a great way to continue to spread the message of the gospel.
E-Week	This was the first year we had officially run this event and it was incredibly powerful! Whilst campus was quiet it was great to engage in evangelism training with our existing members, and it was great to see them grow in confidence but in particular, their faith as they boldly declared their love for Christ as they openly, and empathetically went and invited ACU students in for conversations about faith and freedom.
MYC/AnCon Attendance	13

### About your Campus

As we think about the AFES mission in terms of evangelise, encourage, train and send, write one or two sentences about the strengths, weaknesses and opportunities of each of these areas.



### Strengths, Weaknesses and Opportunities:

<b>Evangelise</b>	We are provided with so many opportunities on campus to share the news of Jesus with others! This has been a great blessing. As EOC on Strathfield continues to grow hopefully our ability to have even more training opportunities, or experienced students in walk up to partner alongside.
<b>Encourage</b>	Apart from the words of encouragement in the bible, the biggest encouragement this year has been the growth in our group, and seeing so many more students grow closer to God, and thus encourage each other in their walk with Christ.
<b>Train</b>	The partnership between our bible studies and the Meet Jesus mission has provided a great opportunity to train us up in sharing the gospel in a clear and concise way. By meeting weekly with EOC North Sydney next year for cross training, we hope that training becomes an even larger part of life at EOC Strathfield.
<b>Send</b>	It was super encouraging for several students to go along to MTS recruit and leave feeling convicted about uni ministry. It remains our steadfast prayer that we can continue to walk in the footsteps of Christ and be sent out as disciples across the nations.

**What are the main ways your group evangelise on campus?**

Our main form of evangelism is through our events on campus. From orientation week through to Easter or evangelism week, we make sure that we intentionally invite people into conversations that talk about the truth of the gospel. Similarly, the wearing of our EOC or Meet Jesus t-shirts has been a great conversation starter for students in their classes. Often our main evangelistic question is partnered alongside an activity or food that we are sharing with people to make it as non-confrontation and inviting as possible. We have a variety of tracks and other gospel supplies to share with people so they have something to refer back to about our conversations. Our advertising for different events across campus also serves as a form of evangelism.

**As a group, what are you finding tough?**

With changes of the staff team and apprentices at the end of last year, splitting our staff team across two campus' has provided additional challenges of being able to balance the workload. We are also finding it difficult to build our core group so that they are being willing to serve, without being overloaded by university requirements and involvement at church.

**If known, what are some your plans for 2025?**

Orientation day stalls, Easter events, E-Week, MYC, NTE, weekly bible studies, cross-training

**How does your group use AFES PrayerNet to pray for other groups?**

This is something we are hoping to have the capacity to do in a larger way next year. Currently we will pray for other groups occasionally during our prayers in Common Hour.

**How can we pray for you?**

Continued growth and sustaining of the group. May God continue to place the right people on campus to be open and willing to join our ministry. May the lives of those who don't yet know Jesus continue to be blessed and transformed through EOC.

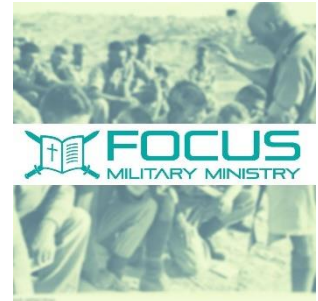
**Conferences / Events**

List 3 strategically important reoccurring or one-off conferences / events you run for your campus group.

Event Name	Why this event is important to your campus group
Chapel	This event run by military Chaplains gives us a huge number of first year contacts (~120 out of a class of ~340).
Trivia Night	This event early in semester 1 gives Christians in our group a great opportunity to invite friends who are not yet Christians. This year we had 40 regular and 31 non-regular students attend.
Winter Camp	This camp is our MYC equivalent.
MYC/AnCon Attendance	20

**About your Campus**

As we think about the AFES mission in terms of evangelise, encourage, train and send, write one or two sentences about the strengths, weaknesses and opportunities of each of these areas.



**Strengths, Weaknesses and Opportunities:**

<b>Evangelise</b>	We tend to have 3-4 uncover groups running at any given time - these have been very fruitful! We'd love to have more Christian students in our group on board with uncover - through training and cultural change.
<b>Encourage</b>	Our focus with encourage is equipping Christians for military life. We have bespoke Bible studies for this.
<b>Train</b>	Evangelism training (semester 1) and small group leader training (semester 2). Interest in evangelism training has dropped off in recent years whilst interest in leader training has remained strong.
<b>Send</b>	We now have a graduation preparation package which we do with grads 1-1 which tries to account for the very different paths that military officers will take after ADFA and helps them start to consider future ministry/mission.

**What are the main ways your group evangelise on campus?**

Through friendships, inviting to events, inviting to do uncover

**As a group, what are you finding tough?**

Competing for students' time with other clubs

**If known, what are some your plans for 2025?**

Growing our winter camp to include networking with graduates

**How does your group use AFES PrayerNet to pray for other groups?**

Not currently using :(

**How can we pray for you?**

For many good contacts amongst first years as they undergo intense military training in February

**Conferences / Events**

List 3 strategically important reoccurring or one-off conferences / events you run for your campus group.

Event Name	Why this event is important to your campus group
Small Groups	<p>Small Groups have been solid all year. It continues to be the largest engagement from the student body at ANU. We even have a small group meeting in college accommodation on campus! Praise God that students are gathering together to read the word, pray for one another, and be an encouragement to one another. We have spent time in the Gospel of John, as well as digging into the books Daniel and Romans. In John we met Jesus, the risen Lord who gives forgiveness and life. John 20:31 says, 'but these are written so that you may believe that Jesus is the Christ, the Son of God, and that by believing you may have life in his name'. In Romans, we understood more the depths of our sin (Romans 3:10-18), but also the great hope that, 'There is therefore now no condemnation for those who are in Christ Jesus' (Romans 8:1). We are part way through the book of Daniel learning that our God is sovereign over all, and seeing an example of how to live godly lives in a secular world.</p>
Mission	<p>We stood out this year in our yellow Meet Jesus merch and our more low-key outfits as well. It's was wonderful seeing people do Campus Conversations each week proclaiming Jesus to a place that desperately needs the gospel. One week we had 12 people go out to do Campus Conversations, six of whom had never done it before!</p> <p>We have also had several people reading Uncover John as well as other parts of Scripture with non-believers. We've even had the great privilege of seeing some people become Christians through this ministry! Praise God!</p>
T3	<p>T3 (Training, Tucker, Theology) has been a wonderful encouragement this year. It's been such a blessing to have the Chaplaincy space on campus each week, it's been such a blessing to have such great training and teaching, and it's been wonderful to spend time together having a meal and praying for our friends together. Praise God for the gospel hum that is happening at T3 and I pray that the training we receive will help equip us more and more to reach the campus.</p>
MYC/AnCon Attendance	60

**About your Campus**

As we think about the AFES mission in terms of evangelise, encourage, train and send, write one or two sentences about the strengths, weaknesses and opportunities of each of these areas.



**Strengths, Weaknesses and Opportunities:**

**Evangelise** At ANU we have many opportunities to share the Gospel by inviting our friends to Small Groups or Weekly Bible talks and getting involved in Campus Conversations. But unique to 2024, we have been able to start a Bible Study in the residential colleges which will most likely turn into two or three Bible Studies in 2025.

**Encourage** At Focus we have a strong group of students who are on board with the mission of reaching the campus together. Pray though, that we will grow in recognising and looking out for our brothers and sisters who feel more so on the outside.

<b>Train</b>	At Focus we enjoy our weekly training night T3 as well as being trained through 121 catch-ups and camps throughout the year. We are really thankful to our staff who've helped us to hold a Biblical Worldview and help us gain skills in handling God's word.
<b>Send</b>	In 2024 we had our first Trainee start who also was a student at Focus and it seems like this will be a trend for the next few years. Pray that they are trained well to be sent with the Gospel to serve Jesus wherever they end up.

### **What are the main ways your group evangelise on campus?**

The main ways we evangelise on Campus is through Campus Conversations, Small Groups, Weekly Bible Talks and Focus International Talks.

### **As a group, what are you finding tough?**

ANU feels like a place that is particularly against Christian culture so it's easy for us to feel judged by the world, but more importantly, difficult to introduce people to the person of Jesus. Pray that we will have the courage to introduce people to Jesus and that the campus will be open to meeting the man rather than dismissive due to cultural differences.

### **If known, what are some your plans for 2025?**

Our plans for 2025 are to continue proclaiming Christ on campus. We want everyone to have the opportunity to meet Jesus by listening to Bible Talks and/or reading the Bible for themselves.

### **How does your group use AFES PrayerNet to pray for other groups?**

We have a weekly prayer meeting where, among other things, we pray for other campus's around Australia. As well as at Weekly Bible Talks and on our Camps.

### **How can we pray for you?**

Please pray that God will use Focus to Glorify the name of His Son. For opportunity and courage in Evangelism. For many to hear Jesus, and many to come to know Jesus. That Christians would grow in their godliness and service of Christ. And that in all things we would be dependent on God in prayer, looking forward to Jesus' Return.

**Conferences / Events**

List 3 strategically important reoccurring or one-off conferences / events you run for your campus group.

Event Name	Why this event is important to your campus group
Pancake BBQs	Pancake BBQs gave our student group an opportunity to get to know the students of the Albury campus. Being a small campus, being able to see the same people every time we had a BBQ as great for building relationships, seeking to show love to others, and share the love of Jesus with them.
Doctrine and dumplings.	We had a few evenings pulling apart a section of the doctrinal basis, whilst making dumplings together. It was a great way to encourage fellowship and building deeper connections with those in our group, and going really deep into theological topics.
UBS Lite	In exam weeks, we still wanted to meet together as a group. During the exam weeks, we do a lighter session, meeting in someone's home, reading the Bible and praying with one another. It has been a great way of continuing to foster relationships with those in our group, and how we can support each other and those on campus during the stress of exam weeks.
MYC/AnCon Attendance	Two students from our group attended MYC. Considering, our group at the time was about 4 of us, we had a 50% turnout.

**About your Campus**

As we think about the AFES mission in terms of evangelise, encourage, train and send, write one or two sentences about the strengths, weaknesses and opportunities of each of these areas.



**Strengths, Weaknesses and Opportunities:**

<b>Evangelise</b>	As a campus group, seeking to share Jesus with our friends at Uni was valued and prayerfully considered. One member had the opportunity to read Uncover John with a person who was interested in finding out more about Jesus, and they became a follower of Jesus! To grow in evangelism, we could become more prayerful and prioritise 2 for 2s in our study.
<b>Encourage</b>	As a group, we seek to build up each other in Christ and spur each other one to love and good deeds. Being a small group, it encourages a community-minded attitude, and enables us to learn about Jesus together as a group, no matter our background or how recently we have become a Christian.
<b>Train</b>	Our staff worker runs one to ones, reading the Bible and training us up in our knowledge and understanding of God. Being a small group, it has meant there have been many opportunities to be trained in leading Bible studies and MCing, as well as growing in confidence of the faith we have in Christ. Having lessons the doctrinal statement from AFES has been insightful and encouraging. For improvement, more training on how to share the gospel with our friends.
<b>Send</b>	Our staff worker seeks to provide extra support for those who are leaving University by training them in one to ones, and having a Uni leavers day, discussing helpful topics that support those being sent with the gospel into their workplaces and beyond.

**What are the main ways your group evangelise on campus?**

Through sharing Jesus with our friends. Being a small campus gives us opportunities to get to know our peers well.

**As a group, what are you finding tough?**

Being a small group can be challenging in terms of running events and capacity for committee.

**If known, what are some your plans for 2025?**

To provide a student group that welcomes all people, meets weekly for Bible study and in a one to one capacity, growing in the likeness of Christ.

**How does your group use AFES *PrayerNet* to pray for other groups?**

During our weekly Bible studies this semester, we have used the prayer points from PrayerNet to pray as a group.

**How can we pray for you?**

Praise God for the work He does on the Albury campus, even though it may look different to what we ever imagined it would be - it is so much greater!

Pray that God would continue to draw people near to Him on our campus, that they would come to know and love Jesus and the glorious hope that is found in Him.



**Conferences / Events**

List 3 strategically important reoccurring or one-off conferences / events you run for your campus group.

Event Name	Why this event is important to your campus group
Getaway 2024	An important event that occurs at the start of the year for us to fellowship as a campus and join with Bathurst Christian Students from the Bathurst CSU campus to encourage and be encouraged by them.
Invitational Pizza Night	A key evangelical and invitational night for 2024, an amazing night where we saw 25 non-Christians come and join our group for a free pizza dinner, and a talk from Greg. A great opportunity to be more known as a group on campus and to further our culture of invitation.
MYC 2024	A fantastic week that is key to our group as we spent it with the Christian groups from CSU Wagga, Albury, and Bathurst looking at the Holy Spirit. A great opportunity for our group to serve with and for the other campuses, fellowship and deepen our relationship with them and with one another, and grow in our knowledge of the Holy Spirit.
MYC/AnCon Attendance	Approx 50 - including all CSU campuses

**About your Campus**

As we think about the AFES mission in terms of evangelise, encourage, train and send, write one or two sentences about the strengths, weaknesses and opportunities of each of these areas.



**Strengths, Weaknesses and Opportunities:**

<b>Evangelise</b>	A great culture of invitation has been continued throughout 2024, with our group often doubling in number at invitational nights.
<b>Encourage</b>	Receiving a video update from our missionary partner Gill Law in Rome, and also getting to meet her in person during her time in Australia has been super encouraging for the group!
<b>Train</b>	Fantastic opportunities for training in many different areas throughout 2024, including our Weekend Training Day, PTC training at church, Getaway, MYC and more.
<b>Send</b>	Two students attended the MTS Mission Minded Conference in Canberra and were encouraged on how they could consider this as a future possibility. A visit from our link missionary Gill Law was also a great opportunity for pondering this.

**What are the main ways your group evangelise on campus?**

Invitational nights that offer free food and great fellowship, and serving the group at events such as o-week (providing free pancakes), and recovery BBQ's.

**As a group, what are you finding tough?**

Low numbers of students attending MYC and NTE

**If known, what are some your plans for 2025?**

Committee Retreat, Getaway, MYC, NTE

**How does your group use AFES *PrayerNet* to pray for other groups?**

Not currently used as far as I am aware.

**How can we pray for you?**

That our culture of bold invitation would continue, and that through this students would have opportunity for great conversation and many would come to know and love Jesus on the Orange CSU campus.

**Conferences / Events**

List 3 strategically important reoccurring or one-off conferences / events you run for your campus group.

Event Name	Why this event is important to your campus group
Unichurch	It's our weekly public meeting, gives us time together as a community, and we use it to train students to serve the local church.
CF Weeknights	These are small-group Bible studies in which we read the Bible together, pray for one another, and through them we train people in leading Bible study groups in local churches.
Mid Year Conference	This conference gives us a chance to meet with other CSU campuses to encourage each other and make new friends. We spend a week on a single topic of doctrine, and learn how to think theologically about it.
MYC/AnCon Attendance	40

**About your Campus**

As we think about the AFES mission in terms of evangelise, encourage, train and send, write one or two sentences about the strengths, weaknesses and opportunities of each of these areas.



**Strengths, Weaknesses and Opportunities:**

<b>Evangelise</b>	We have great opportunities to evangelise our friends in our colleges and classes, and we always have non-Christians in our meetings and around the group. We spend a lot of energy in training our students to speak the gospel to their friends.
<b>Encourage</b>	We have a good opportunity to encourage one another in the faith and in God's mission on our campus. One struggle we have is gathering the whole group in one place to encourage one another.
<b>Train</b>	We have plenty of opportunities to train in Christian life and ministry, particularly at Unichurch, which is run by students, for students. One trend, though, is that students increasingly feel that they don't have enough time for training courses or opportunities.
<b>Send</b>	We have a strong emphasis on sending graduates into local churches in rural areas, and support graduates who have gone to the nations on mission.

**What are the main ways your group evangelise on campus?**

This year we ran the John Drama, and focused on inviting friends to read Uncover John with us.

**As a group, what are you finding tough?**

We are finding it tough to create a strong sense of family and cohesion across the whole group, and have a small core but a large fringe.

**If known, what are some your plans for 2025?**

We're planning on learning some different ways to articulate the gospel, in particular using the SpeakLife Jesus 321 course.

**How does your group use AFES *PrayerNet* to pray for other groups?**

We struggle to use this at all.

**How can we pray for you?**

Please pray for a strong sense of unity in God's mission on our campus, and a culture of care and love for one another.

**Conferences / Events**

List 3 strategically important reoccurring or one-off conferences / events you run for your campus group.

Event Name	Why this event is important to your campus group
MYC	This event was important in helping build stronger friendships and relationships between students at PCS and allowing us to dig deeper into God's word together.
Meet Jesus Night 2	This event was important because it was our highest attended night of the year with over 50 students attending and around 30-35 staying to hear the talk. It was great to see so many pcs students invite their friends to come along to hear God's word.
Pancakes, Procrastination and Ponderings	This event was important in building community on campus whilst allowing students from PCS to serve and take the gospel to non-christians.

---

MYC/AnCon Attendance    12



**About your Campus**

As we think about the AFES mission in terms of evangelise, encourage, train and send, write one or two sentences about the strengths, weaknesses and opportunities of each of these areas.

**Strengths, Weaknesses and Opportunities:**

<b>Evangelise</b>	We had quite a few events tailored to evangelising to non-christian students and they all were successful. Every time we held an event there was at least one non-christian there to hear the gospel. We probably didnt do great in one on one evangelism on campus and so that might be something we can improve on next year.
<b>Encourage</b>	PCS main meetings was a great time to regularly encourage one another in God's word. I think this is definitely an area we can improve on - being encouraging to one another as students and friends. MYC was a great time to get to know other students on a deeper level to encourage and be encouraged by them but I think we need more encouragement specific opportunities.
<b>Train</b>	I think training is definitely an area to improve in. We hosted discipleship training groups like 'Learn the gospel' and 'how to run a bible study' but i think they could've been better attended.
<b>Send</b>	In terms of 'send', PCS regularly prayed for missionaries overseas and we had time slots dedicated to mission over MYC, but apart from these times, the idea of 'sending' wasn't something that was talked about all that much.

**What are the main ways your group evangelise on campus?**

By hosting events and utilising ABC groups.

**As a group, what are you finding tough?**

There is some friction at the moment in our relationship with the university team. And so we are finding dealing with the university on certain aspects quite challenging.

**If known, what are some your plans for 2025?**

O-Week stall, evangelism stalls, ABC groups

**How does your group use AFES *PrayerNet* to pray for other groups?**

In our main meetings we utilise the prayer net to pray for other uni groups around Australia and the world.

**How can we pray for you?**

Pray that PCS may be built up as a group as we are strengthened in our faith but also pray that we may have opportunities to serve our university friends and help them understand who Jesus is

**Conferences / Events**

List 3 strategically important reoccurring or one-off conferences / events you run for your campus group.

Event Name	Why this event is important to your campus group
Mid-Year Conference	Mid-Year Conference (MYC) serves as a central event to unite Christian Union together in deeper fellowship, especially as many first years become part of CU. Through deeper teaching and challenging seminars, many who attended came out feeling as if they have significantly more understanding of God's word. It is important as it generates greater friendship at CU and matures individuals into the knowledge of Jesus.
Campus Conversations	Campus Conversations happens at midday on Tuesday, Wednesday, and Thursday. It is a key initiative that gives CU members exposure to different people and ideas as they do walk-up. We have seen significant growth this year in terms of those volunteering their time to do walk-up and we have many great stories from Campus Conversations each and every week. It is important in reaching the campus and equipping CU members with practical conversational evangelism skills and experience.
Cross in Action	Cross in Action (CIA) is our training hour which has two strands each semester. The first strand generally builds on essential and basic doctrine while the second strand helps support leaders at CU develop exegetical and biblical study skills. CIA is an important event as it provides support for leaders to fulfil their duties as they lead bible studies or otherwise and also quickly and effectively teaches and edifies other members of CU.
MYC/AnCon Attendance    138	

**About your Campus**

As we think about the AFES mission in terms of evangelise, encourage, train and send, write one or two sentences about the strengths, weaknesses and opportunities of each of these areas.



**Strengths, Weaknesses and Opportunities:**

<b>Evangelise</b>	A strength is that we have a consistent presence on campus through walk-up and stalls. A weakness is that many people have a hard time or a low priority when it comes to inviting classmates to learn about Jesus.
<b>Encourage</b>	A strength is that people attend weekly events with good consistency throughout semester. A weakness is that the general culture in many ways is not intentional among the members for mutual building-up.
<b>Train</b>	A strength is that we have accessible training each week that can cater for a variety of people. A weakness is that attending training is difficult to attend for people due to other commitments of members.
<b>Send</b>	A strength is that we continue to encourage people to consider ministry in the future, with one ministry event per semester planned. A weakness is that we don't equip people well to be Christians in their workplaces or other areas of life they may find themselves in.

**What are the main ways your group evangelise on campus?**

Campus Conversations, which is an hour of walk up held Tuesday-Thursday is a key way that our group evangelises. We also use prayer cards that has 5 (or more) friends we're praying for and seeking to read the Bible or Uncover with.

**As a group, what are you finding tough?**

We are finding out staff-student partnership difficult and there has been significant stress in this area in 2024.

**If known, what are some your plans for 2025?**

We will hold and MYC and also attend NTE.

**How does your group use AFES *PrayerNet* to pray for other groups?**

We occasionally integrate it into our prayer group called CU Prays.

**How can we pray for you?**

Please pray for CU as we adjust to significant staff changes, with several leaving and several coming in next year,

## Conferences / Events

List 3 strategically important reoccurring or one-off conferences / events you run for your campus group.

Event Name	Why this event is important to your campus group
Public Bible Talk	Throughout the year, we conducted Public Bible Talks, the cornerstone of our weekly activities. We delved into various themes and topics including: Meet Jesus - Find the Truth, Deuteronomy - Life With God and exploring the book of James. These sessions not only offered an opportunity for thorough biblical teachings but also encouraged open discussions and Q&A sessions. Following each talk, many participants stayed behind for informal interactions, fostering a sense of community through chats and quality conversations.
Small Groups	Small groups act as a valuable opportunity for students to get to know each other better in a smaller and informal capacity. Small Groups served as an essential bridge to connect with students who couldn't attend our main Public Bible talks, as they often coincided with the topics and books of the Bible discussed during these sessions. Our small groups vary in times and locations at UC throughout the week, at the leader's discretion.
T3	T3, our primary training platform during the academic semester, was a time of deep growth and connection as we delved into a range of theological topics, including the following: Leading someone to Christ, Conflict, Mental Health and Resilience, Men and Women in Ministry. And our semester two topics: Engaging with Hinduism, God's sovereignty and human responsibility, Dating, Work.
MYC/AnCon Attendance	20

## About your Campus

As we think about the AFES mission in terms of evangelise, encourage, train and send, write one or two sentences about the strengths, weaknesses and opportunities of each of these areas.



## Strengths, Weaknesses and Opportunities:

<b>Evangelise</b>	With the assistance of the national mission - Meet Jesus campaign, UC FOCUS took part in actively seeking to evangelise to the UC campus in general. Through walk up evangelism and running events, such as Trivia nights and Questions for a Christian sessions, we aimed to meet new faces. While there were few who were new to these sessions, the core of the student group took these opportunities to get to know each other better, deepening relationships and friendships, fostering a deeper sense of community within the group.
<b>Encourage</b>	Small groups have been an encouraging time for students to get together to read the Bible and pray with one another. It is a good opportunity for students who are not able to come to the main Bible talk meeting to still connect with FOCUS as there are multiple times during the week. However, Small group times do not always line up with student availability. We do, however, work to try and meet 1-1 with students who are unable to do both PBT and Small Groups where we can.
<b>Train</b>	T3 is a time where we are trained to read the Bible in a way that shapes the way we think about different life topics (Leading someone to Christ, Conflict, Mental Health and Resilience, Men and Women in Ministry), teaching us to have a theological lens when it comes to looking at the world and reinforcing the authority of Scripture in our own lives.

---

**Send** With a smaller population of our student group graduating this year, compared to us losing half of our student group last year, there are very promising numbers for our 2025 cohort. We do have a couple of students who are graduating at the end of this year.

---

**What are the main ways your group evangelise on campus?**

With the assistance of the national mission - Meet Jesus campaign, UC FOCUS took part in actively seeking to evangelise to the UC campus in general. Through walk up evangelism and running events, such as Trivia nights and Questions for a Christian sessions, we aimed to meet new faces. While there were few who were new to these sessions, the core of the student group took these opportunities to get to know each other better, deepening relationships and friendships, fostering a deeper sense of community within the group.

**As a group, what are you finding tough?**

We can, at times, find reaching the university more generally a bit more difficult. For example, our campus Trivia Night event particularly struggled to gain any non-believers attend.

**If known, what are some your plans for 2025?**

n/a

**How does your group use AFES *PrayerNet* to pray for other groups?**

We pray for varying campuses that share their points via the prayer net

**How can we pray for you?**

Please pray for our upcoming AGM, that this would be a time of celebrating the year just gone! Please also pray for the new student committee that will begin meeting to start planning for 2025!

## Conferences / Events

List 3 strategically important reoccurring or one-off conferences / events you run for your campus group.

Event Name	Why this event is important to your campus group
Kick-Off Camp (KOC)	KOC is a three-day camp we run after the first teaching week of the year. This camp is important as it provides a great way to invite new and existing members of CU, young workers and people who are interested in finding out more about Christ, to a relaxed camp with a focus on meeting new people, hearing from God’s word and being challenged to put God at the centre of life from the start of the year.
Intensive Care	This was a new event in 2024 where we invited online students who were on-campus for the Intensive School period (where they come to Armidale to complete mandatory practicals) to come to a soup night and meet the body of Christ at CU, spend time building relationships with fellow students and hear from God’s word and work through a testimony. This event was an important start as we seek to evangelise to parts of the UNE community that we haven’t effectively been able to reach previously, such as the large numbers of online students who have little to no interaction with CU since they are not on campus often.
Mid-Year Conference (MYC)	MYC is a five-day camp that we hold during the mid-year break. It is an awesome time for intensive training and encouragement of the uni-aged Christians and people seeking to learn more about Christ (whether students or young workers). This year our theme was the Resurrection, so we heard five fantastic talks that challenged attendees to grapple with the significance and truth of the Resurrection and consider how it affects our lives. Across the week we had four Foundation Sessions where we went through the whole Bible, looking at all the passages that mention keywords associated with the Resurrection such as death, new life, Sheol and much more. We also had four Manuscript Discovery sessions where we went through 1 Thessalonians without the verses and headings added in and learnt how to read the passage in context, seeing God’s messages to the people of the time and to us now. Overall this camp is extremely important as we seek to grow CU in the knowledge and love of Christ.
MYC/AnCon Attendance	31 students and 16 young workers

## About your Campus

As we think about the AFES mission in terms of evangelise, encourage, train and send, write one or two sentences about the strengths, weaknesses and opportunities of each of these areas.



## Strengths, Weaknesses and Opportunities:

**Evangelise** As a predominately online university, the small number of students on-campus creates a space where on-campus CU members can get to know their peers quite well due to small class sizes and fewer students in the colleges. Through building deeper personal relationships with their classmates our members have been able to share their faith in day-to-day life and personally invite people to meet Jesus through CU events and church. However, the small number of on-campus students creates challenges for walk-up evangelism and other evangelism strategies that could reach larger numbers of people as there simply aren’t that many students on campus each day. One great opportunity for evangelism is the Intensive School periods where online students attend mandatory practicals on-campus, so we hope to invite more of these students to meet Jesus in the short time that they are on-campus and work out ways to help them find out more about God when they go home.

<b>Encourage</b>	Encouragement is one area that CU has been really fruitful in over the last few years. CU runs many events throughout the year that facilitate quality fellowship time where people in CU can grow closer as the body of Christ and encourage each other in the faith. Events that help build relationships and community have created an environment where people can have deeper conversations without the fear of judgement and instead with a spirit of challenging each other to build one another up in the knowledge and love of Christ.
<b>Train</b>	CU runs a weekly event called CU Training in which students are trained in their knowledge of God and equipped to go tell others about Christ. This year, we have read several different books together during CU training, including Share the Gospel by Tony Payne, which helped us learn the Two Ways to Live structure for explaining the Gospel, and The Coming of the Holy Spirit by Philip Jensen. We also did an apologetics series around different world religions and non-evangelical denominations of Christianity, helping students understand the beliefs of different groups and how we can share the gospel with them. CU Training has also included discussing Hot Topics, which are current world issues or ideas that we discuss from a Christian perspective. Overall, this training has been highly valuable for many of our members, but we have also learnt recently that some CU members thought CU Training was too advanced for them or thought it wasn't open to anyone and everyone, so we need to make sure that it is very clear that training is for everyone, whether you've been a Christian for a long or short time or even if you are still considering Christianity but don't yet have a saving faith in Jesus.
<b>Send</b>	Given the uniquely close relationship we have with St Mark's UNE Church on our campus, one of the main ways we see our members taking steps to explore the ways and places God might use them in the future is through the MTS programme at St Mark's. All of the current trainees and two of the three incoming next year have been significantly involved with CU for several years and continue to help us with our events as part of their MTS training. We are thoroughly convinced of the usefulness of these programmes and are excited to see many of our members seriously considering a life of vocational ministry as they think about these pathways. We also send NTE missions to smaller, more rural towns to encourage the churches in those communities and help run events, which is another great way that our members get to experience what different types of ministries look like and, even more importantly, why equipped, faithful Christians are vital in rural Australia. Finally, every few years we try to send a team overseas for similar experiences, with the addition, of course, of the cross-cultural aspect of such trips.

### What are the main ways your group evangelise on campus?

As a campus with far fewer students studying on-campus than online, the members of CU have the unique ability to build deeper personal relationships with their classmates throughout their degree as students are likely to see other on-campus students in their degree frequently and get to know them since the class sizes are often very small. This can be both a blessing and challenge for our group as the personal relationships our members can build with their peers create opportunities for personal invitations to CU events and church which we've found to be quite effective at inviting people in to meet Jesus. However, it is also challenging to reach larger numbers of students through traditional means like walk-up evangelism or events run in public spaces around campus, as there simply aren't that many students on campus day to day. Intensive School periods where many online students must attend mandatory practicals provide an awesome opportunity to reach larger numbers of students, so we have begun to run evangelistic events aimed at reaching Intensive students, but following up with students who are curious about Christianity and want to hear more can be challenging since they leave within a few days of coming to campus.

### **As a group, what are you finding tough?**

UNE is a fairly unique university because around 80% of students are online and may only set foot on campus a few times throughout their whole degree. This means it can be challenging to evangelise to these students as we are yet to work out a good way to let online students know we exist, let alone cater events more towards those online students. To try to reach this group, we came up with our Intensive Care event which ran during an Intensive School period when many online students come to campus to complete mandatory practicals. During this event we had walk-up teams going to speak to students during their lunch break and inviting them to the Intensive Care event, but although we spoke to well over 100 students across the 4 days of walk-up, we struggled to have deep, meaningful conversations and only 9 non-CU students ended up coming to the Intensive Care event to hear more about Christ. This was a great start, but we would love to spread God's Word to more students and see Christ's church grow!

We have also found it challenging to reach new on-campus students throughout the year as there are so few on-campus students that we feel walk-up evangelism may not be effective on our campus, but the posters and social media posts we make don't seem to be reaching the broader UNE community. We have found personal invitations have been the most effective way to reach new people, so we hope to encourage more of our members to invite their friends, classmates and other people they meet around campus to come meet Jesus.

### **If known, what are some your plans for 2025?**

In 2025 we would like to run more evangelical events that focus on reaching the unreached on campus and inviting them to meet Christ. Although we are yet to work out the exact event schedule, we will likely run several Q&A Nights that we'll advertise across the campus so that students can come and ask their questions about Christianity. In previous years, these Q&A Nights have rarely had any non-CU members attend, so we will try hard to get the word out to students who aren't a part of CU and encourage CU members to invite their friends to come along and hear about God. In 2024 we also brought back an event called Text for a Toastie, where students can text in questions about God and Christianity and an order for a toastie and then we deliver their toastie along with an answer to their question for free. This year we received 55 questions through running this event twice in the year, so we would love to run this event again with more advertising around the campus (particularly in the colleges) and hopefully meet students who are curious about Christianity but are reluctant to come to an event at the church on campus. Some other events we will likely run again are: Jesus and Cheeses - a night where we meet to have quality fellowship time while enjoying cheese boards and hearing from God's word; Intensive Care - a new event where we invite online students who are only in town for Intensive Schools to come and enjoy a soup night and fellowship with our members; Bushdances - a social night for students to meet people in the CU and broader church community in a fun, relaxed way and hear a testimony from one of our members.

### **How does your group use AFES PrayerNet to pray for other groups?**

Once a week we run Prayer Breakfast, an hour-long prayer meeting where we pray for our campus, other campuses around Australia using the AFES PrayerNet, and campus groups internationally. These prayer points are sent out to everyone in CU at the start of

### **How can we pray for you?**

Please pray that God will help us discern better ways to reach the unreached on-campus and online students at UNE. Pray we can help online students seek a saving relationship with Christ in the limited time they're on campus and continue to encourage and equip them to continue in Christ once they return home to their towns and cities and find faithful churches there. Pray that we can shift our focus to reaching out, without diminishing our ability to encourage, train and send the body of Christ already part of our group. Pray for continued good relationships with the university so that we can continue to receive funding from the uni, use uni buildings and run evangelistic events out in the open on campus. We're also going to be welcoming a new couple, Peter and Katharine Yock, who will be working full- and part-time for AFES with CU. Praise God for bringing them to Armidale and pray for us as we adjust to having much more staff input, and that the transition period will be smooth and the beginning of a new season in CU where Christ will be proclaimed and glorified all the more at UNE.

**Conferences / Events**

List 3 strategically important reoccurring or one-off conferences / events you run for your campus group.

Event Name	Why this event is important to your campus group
Week 1 Welcome Lunches	In week 1 of term 1 we hosted free pizza lunches in the hour before each of the three Bible talks for the week. The lunches allowed Christians to meet together and encourage each other as a new year began; they also provided opportunities to invite non-Christians and evangelise to people passing by.
Kick-On Conference	On the Saturday before the start of trimester 3 the staff team ran a day conference for Christian students. The aim was to prepare us for the upcoming Meet Jesus heightened mission activities, and to evangelise to those on campus (it was on the same day as Open Day).
Meet Jesus Toastie Stall	In week 2 of trimester 3 each of the faculty groups took turns running a "toastie stall", handing out toasted sandwiches and seeking to share the gospel with students and staff on campus. This provided opportunities to invite people to our evangelistic talks which were happening in week 3, and to get people thinking about the question, "What do you value most in life?" (the theme of the talks)
MYC/AnCon Attendance	547

**About your Campus**

As we think about the AFES mission in terms of evangelise, encourage, train and send, write one or two sentences about the strengths, weaknesses and opportunities of each of these areas.



**Strengths, Weaknesses and Opportunities:**

- Evangelise** The Meet Jesus mission provided lots of opportunities and encouragement for evangelism, including evangelistic talks, merchandise, training events, and increased participation in walk-up. However, most of these initiatives were staff-led; we would love to increase the zeal for evangelism from the bottom up, starting at a student level.
- Encourage** There are many times during the week and throughout the year when the Christians on campus can encourage each other: Bible studies, social events, camps, and conferences. But we could improve our individual encouragement: things like praying for each other, keeping each other accountable in our walks with God, and spurring each other on to love and good deeds.
- Train** We have weekly training opportunities, through CORE training and CORE theology, as well as larger-scale activities, such as leading a Bible study or serving on a team at a conference (e.g., music, tech, MC). I think it would be good for us to increase this latter, practical training, so that students graduate well-equipped to serve in their local churches or in full-time ministry through a variety of ways.
- Send** We encourage graduates to stay in touch, through events such as MYC Family Night and the end of year Thanksgiving event, as well as through ongoing prayerful and financial partnership. However, we would love to see more graduates return as ministry trainees, since these numbers have declined in the last couple of years.

**What are the main ways your group evangelise on campus?**

We seek to maintain a public presence on campus through our regular Bible studies and Bible talks. We want everyone on campus to walk around the uni, see people reading the Bible, and see signage for our events. We also engage in regular walk-up evangelism and an annual time of heightened mission.

**As a group, what are you finding tough?**

We are a very large group, which brings with it both joys and challenges. It can be hard to get to know everyone well, and some people you may only see occasionally. As a result, cliques and circles form which are not always helpful. In addition, as mentioned briefly earlier, most of our events and activities are led and initiated by staff workers and ministry trainees. We are very thankful for them and their work, but I think we could grow in our ability to encourage one another as students and not relying solely on the "higher-ups" to lead.

**If known, what are some your plans for 2025?**

We are looking forward to all of our regular conferences and weekly activities in 2025, but one exciting change will be our 50th anniversary celebration in March.

**How does your group use AFES *PrayerNet* to pray for other groups?**

We try to submit one or two prayer points every month (although this can be inconsistent), and we encourage our Bible study groups to pray with the PrayerNet at least once per trimester.

**How can we pray for you?**

- praise God for the many people whom he has saved at UNSW this year
- thank God for the provision of new staff members and ministry trainees for next year
- pray that Christians at UNSW will continue to prayerfully proclaim the crucified Christ as Lord of all
- pray that the various staff transitions (a staff member on sick leave, a staff member leaving, new staff arriving, and a reduction in ministry trainee numbers) will not negatively impact the ministry

**Conferences / Events**

List 3 strategically important reoccurring or one-off conferences / events you run for your campus group.

Event Name	Why this event is important to your campus group
Bible Talks	Digging into God's word and seeing how it applies to our lives. Fosters a community that listens to and values God's word
Getaway	Start of year camp that helps foster relationships and helps new people feel connected to the club. Good time away with lots of fun and digging into God's word
Wintercon	Our mid-year conference, in which we have a week away. Great for deepening godly relationships while also being super encouraging by digging deep into a topic in the bible.
MYC/AnCon Attendance	65

**About your Campus**

As we think about the AFES mission in terms of evangelise, encourage, train and send, write one or two sentences about the strengths, weaknesses and opportunities of each of these areas.



**Strengths, Weaknesses and Opportunities:**

<b>Evangelise</b>	This year we had a strong push for students to evangelise to their friends and classmates. While we did see more students do this, evangelism is an area we always need to work on.
<b>Encourage</b>	We have excellent structures to evangelise, something staff is always helpful in. Small groups this year have been an excellent structure to build each other up in our walks with Christ. One way we could improve is in our men's ministry.
<b>Train</b>	Training this year had a strong evangelism focus where students were trained extensively on how to read the bible with someone. Training in other areas is something we want to do more of in the next few years.
<b>Send</b>	We had the pleasure of hearing from quite a few different missionaries this year which was very challenging. This and the MTS recruit conference were great

**What are the main ways your group evangelise on campus?**

We ran around 1 stall a week on average this year. Through these stalls we were able to have great conversation with students on our campuses.

**As a group, what are you finding tough?**

We are finding it tough dealing with the student union. They make it increasingly difficult to run activities that have an outward focus, making their funding guidelines more convoluted and incentivise club activities that only benefit the club. We are also finding it hard to find people who are willing to step up into leadership positions.

**If known, what are some your plans for 2025?**

We are currently still in the planning process of what 2025 will look like, but we will likely focus on training up the next generation after a large amount of graduates

**How does your group use AFES *PrayerNet* to pray for other groups?**

We run occasional prayer nights and we use the prayer points

**How can we pray for you?**

That we will continue to have an emphasis on evangelism while not forsaking building those within our club to serve Christ with their whole lives

## Conferences / Events

List 3 strategically important reoccurring or one-off conferences / events you run for your campus group.

Event Name	Why this event is important to your campus group
Annual Conference (AnCon)	AnCon is a very important event for the EU to engage deeply with God's Word on a particular topic (this year our theme was "The Cross: This is Love") whilst building and enjoying fellowship with one another. It is the biggest one-off all union event, where all of the EU goes away together for 5 days, enabling deep growth and friendships to develop as we sit around God's Word together. Because it's an all union event, it provides a great opportunity for students to meet students from different faculties, including our FOCUS faculty (that seeks to share the love of Jesus with international students). AnCon also provides a place for students to invite their non-Christian classmates too, to engage with the gospel amidst an encouraging Christian environment.
Public Meetings	Public Meeting are a crucial part of the EU ministry, where we are taught from the gospel by one of the EU's senior staff workers. They run every week of semester on Tues, Wed and Thurs (same talk repeated across the three days of each week), and engage with a book of the bible or a particular area of Christian living. PM's are very important for students to sit under God's Word, being taught in theological depth what God's Word is saying and how to apply it into our lives. It also provides a space for EUers from all faculties to gather together in the week, so it is a great place for good fellowship as we encourage people to have lunch together after PM's to continue conversations and build relationships.
Small Groups	Small Group bible studies are part of the bread and butter of EU ministries. Students (and sometimes staff) gather to read God's Word together, engaging deeply to learn from the bible and one another, as well as to pray for each other. Our first and second year small groups also incorporate elements of training to equip students to understand the bible holistically, and how to communicate and teach it to others particularly those from a different background.
MYC/AnCon Attendance	488

## About your Campus

As we think about the AFES mission in terms of evangelise, encourage, train and send, write one or two sentences about the strengths, weaknesses and opportunities of each of these areas.



## Strengths, Weaknesses and Opportunities:

**Evangelise** The EU provides lots of opportunities, training and support to evangelize on campus, which looks like regular walk up across the week, relational evangelism with classmates, prayer for the lost in small groups and public meetings and encouragement to invite friends to small groups, public meetings and AnCon.

A challenge with walk-up evangelism on our campus is that there are many other groups on campus who approach students - at times aggressively, and hence this has lead some students to be more closed off to conversations from strangers who just "walk up" to them.

<b>Encourage</b>	The EU seeks to disciple and grow students in their faith and witness, with opportunities to learn, serve, grow, be equipped and be disciplined by one another and staff. Whilst there are many opportunities, as students spend less time on campus, they are less likely to take up all the great opportunities to encourage and be encouraged.
<b>Train</b>	<p>The EU provides lots of opportunities to train, including bible study leading, leading teams (including faculties or specialist teams e.g. Evangelism), as well as courses to train students in sharing the gospel cross-culturally, including to Muslim Cousins, and train students in areas of Christian living (e.g. working).</p> <p>As we noticed that students were spend less time being involved in the EU, small group studies for first and second years have adapted to include training elements (in leadership, teaching and evangelism) to maximise the access students have to training resources.</p>
<b>Send</b>	<p>The EU seeks to grow students hearts in the love for the lost, particularly for those who live in places less reached and less resourced (LRLR) with the gospel. To achieve this, we incorporate regular prayer for the lost and LRLR, have LRLR workers at our mid-year conference, and organize conferences that encourage students to consider serving in the LRLR and consider working as a gospel worker.</p> <p>Whilst these great opportunities exist, due to capacity students often prioritise other EU ministries and as a result have less time and encouragement to consider being sent as a gospel worker.</p>

#### **What are the main ways your group evangelise on campus?**

Walk up, building relationships in class, personal invitations to read the bible, a weekly dinner for international students to read the bible together, contact table running on a main pathway

#### **As a group, what are you finding tough?**

We are finding it tough...

#### **If known, what are some your plans for 2025?**

We will continue with our weekly public meetings and small groups, and will run our regular mid-year conference AnCon.

#### **How does your group use AFES *PrayerNet* to pray for other groups?**

Personal prayer

#### **How can we pray for you?**

Please pray that the EU would be able to grow its reach on Sydney Campus, that EUers hearts would grow in a longing for the lost to come to faith and this would lead to persistent prayer for and bold evangelism to the many thousands on campus who don't know Jesus.

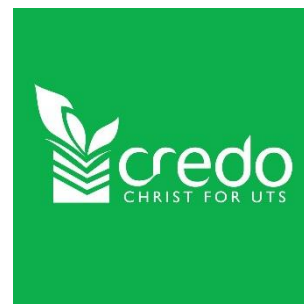
## Conferences / Events

List 3 strategically important reoccurring or one-off conferences / events you run for your campus group.

Event Name	Why this event is important to your campus group
LAUNCH	Credo's LAUNCH is incredibly important to us! It is a fantastic opportunity for us to welcome back everyone to campus, and to share Jesus with them. We did this through thought provoking questions (on the whiteboard OR while chilling out at our drawing table), fun games (e.g., spin the wheel OR ring toss), and free food! LAUNCH was held in February (as it is every year), though sometimes it is held bi-annually (usually at the start of Spring semester). We elected not to this year due to running the Mark Drama (see 'MARK of Jesus series' below).
Easter Time Convention (ETC)	ETC is an annual essential on the Credo calendar. It is an immense privilege to be able to have time together over the Easter long weekend, to consider the LORD's character more deeply through his son Jesus. This year, we looked at God's Guidance in main sessions and had time to review in groups (each person has a dedicated group for this during ETC, but this also happens in faculty time, workshops and of course in late night chats!) It's wonderful to do this with brothers and sisters, as well as those exploring! (including one girl, S who gave her life to Christ at ETC24!) We also host an inter-faculty frisbee tournament which is hotly contested.
MARK of Jesus series	This was a wonderful opportunity we had this year to invite friends and classmates to five Bible talks and two showings of the MARK Drama, to help us all think deeply about the 'MARK' that Jesus has made on the world. The talks were based off of Glen Scrivener's book 'The Air We Breathe' (e.g., 'The MARK of Jesus on Education')
MYC/AnCon Attendance	We had 222 people at ETC this year. Many were full time, though we did have a few graduates and families who joined us on Easter Saturday (as per standard) included in the total number..

## About your Campus

As we think about the AFES mission in terms of evangelise, encourage, train and send, write one or two sentences about the strengths, weaknesses and opportunities of each of these areas.



## Strengths, Weaknesses and Opportunities:

<b>Evangelise</b>	We have wonderful opportunities to do this together weekly on Tuesday's (called 'Connect'), and informally (e.g., one of our members has started up a team of 'Evangers' who also do this when they can throughout the week). Though, I think our Grow Groups overall are currently struggling to set this culture of inviting non-Christian classmates & friends to join throughout the semester.
<b>Encourage</b>	It has been a wonderful blessing to have the encouragement of many brothers and sisters (this year has been no exception), and to encourage them throughout my time at Credo. Especially around serving (genuine acknowledgement of gifts he has given us), but also as we do life together (struggles with life, and the future beyond uni.)
<b>Train</b>	Prime (Credo's training community) is a strong part of our group no matter where you are at with your faith (from learning to sharing your testimony, to leading a Grow Group, or engaging with your Muslim friends).

---

**Send** Continuing on from Prime, one module that is run with most graduating students (both week-week or as a weekend away, dependent on availability) is 'Departure Lounge' which helps you think through all the aspects of work and how to live in a godly way (with work as a key part of that). There is also a clear pathway to apprenticeships at Credo, with info nights or dinners run regularly as well as one-to-one catch ups with either of our coaches.

---

**What are the main ways your group evangelise on campus?**

Connect (weekly walk-up evangelism ministry on Tuesday's) and PLUS (Public Talks) Events run usually twice a semester (e.g., MARK of Jesus was a PLUS Events series). There are also annual (or bi-annual) opportunities like LAUNCH.

**As a group, what are you finding tough?**

See previous page on Grow Groups.

**If known, what are some your plans for 2025?**

Much of this still is TBC. However, we are in the early phases of planning our start-up for 2025 (what we call 'Pre Season' where we prepare, pray & promote). LAUNCH is planned to run again (if not twice next year since we don't plan to do the MARK Drama next year).

**How does your group use AFES PrayerNet to pray for other groups?**

We have not used it this year. This has been completely my fault for not brainstorming where this could fit during our year (not only as student committee, but in our weekly prayer meetings). On reflection, I think it could be helpful to have a set the ex

**How can we pray for you?**

Please thank God for his abundant provision of leaders for next year! We were quite uncertain for a time about how next year would look, but He has faithfully provided almost everyone so far (still a final few to fill). Please pray for them (many are stepping up for the first time, including an all NEW committee!) & those they lead that they would (a) lead faithfully (courage before competence!) and (b) not loosing sight of the inheritance the LORD has given them in Jesus, secure and firm!

## Conferences / Events

List 3 strategically important reoccurring or one-off conferences / events you run for your campus group.

Event Name	Why this event is important to your campus group
Mid Year Conference	Our Mid Year Conference (MYC) this year was on the topic of the Holy Spirit, with Richard Chin brining us the talks from God's word. The week spent away together is crucial for growing us all in our understanding of and convictions about the gospel. Diving deep into God's word through seminars, main sessions, and manuscript discovery along with relationships that are built throughout the week, help us be equipped and ready to proclaim Christ to everyone for Jesus' glory.
9 Weekly Prayer Pods	Starting the day in prayer reminds our group of our dependence on God and the relationship that we have with Him. Through prayer pods this year, we've grown in our prayerful dependence, in our view of God and in our love for Him.
Foundations in Theology	At Foundations in Theology (FiT) we are equipped with the tools to think correctly about the world around us and different ideas. This weekly event helps us to set our vision firmly on Christ, being grounded in His word so that we are not blown about by every wind of false doctrine and human idea.
MYC/AnCon Attendance	142

## About your Campus

As we think about the AFES mission in terms of evangelise, encourage, train and send, write one or two sentences about the strengths, weaknesses and opportunities of each of these areas.



## Strengths, Weaknesses and Opportunities:

**Evangelise** In evangelism, we are strong in seeking to be a visible and shepherding presence on campus. Our Hub Ministries meant that week in and out Uni Bible Group was visible and 'amongst' the students as we read the bible, disciplined one another, and did university together.

There are many more opportunities to be outward looking - lots of new contacts, people who are not yet Christian but now know us.

We are weak in getting alongside one another in evangelism. Often it can be a personal endeavor. We want to be leaning on one another in evangelism not making it a burden on individuals.

**Encourage** In encouragement we are able to walk alongside one another in the day-to-day operations of Uni. Studying together, serving together, and reading God's word together. Being based geographically around areas of campuses, our Hubs have enjoyed making one another more accessible - such that encouragement can occur more often and at more times.

There are many opportunities with a large cohort of first year students to encourage them to grow in leadership and particularly in pushing them to make disciple-making disciples.

A weakness of ours is in having hard conversations and pushing one another to cut out sin. It can be easy for us to be avoiding of one another's weaknesses, and this has led to problematic traits being left unaddressed. This is unloving and not encouraging to leave sin unchecked!

---

<b>Train</b>	<p>Our training is strong in its depth and breadth. We cover a large amount of content across Uni Bible Talks, Foundations in Theology and in Hub Bible Studies.</p> <p>There are opportunities to encourage more students to put what they are learning into practice through practical means. Walk-up evangelism only happens with a significant buy-in at certain periods of heightened mission. This could be an opportunity to have available at all times for strengthening our training.</p> <p>Our training can veer towards providing a lot of head knowledge and lacks the ability to effectively encourage a relational approach to ministry.</p>
<b>Send</b>	<p>Our strengths in send are a focus on the nations through biblical preaching and prayer for our mission partners. All students are encouraged to have a 'sending' mindset as they go through Uni Bible Group. No matter where they are at, they are challenged to see themselves as responsible for using what they have learnt to build up the church and carry out Christ's mission to the ends of the earth.</p> <p>Opportunities are there in encouraging more students and hubs to write to their mission partners.</p>

---

#### **What are the main ways your group evangelise on campus?**

Through our Hub ministries running evangelistic events and services (walk-up, information stall, invite-a-friend events) and also as we operate daily out in the open - through contact with the same people again and again.

#### **As a group, what are you finding tough?**

It's been difficult to encourage one another to keep going and pushing through ministry on campus. It can be hard work running a ministry and many of those who work hard feel hard-pressed and need a boost. We're not always great at appreciating people and supporting them. It's hard when people burn-out and feel hurt by the group.

#### **If known, what are some your plans for 2025?**

We'd like to revamp our Executive meetings to more closely link the student executive with the rest of the club. It's been feeling distant the last few months.

#### **How does your group use AFES PrayerNet to pray for other groups?**

In our weekly prayer pods AFES PrayerNet is regularly used for prayer points - we also occasionally use it at the start of our executive meetings.

#### **How can we pray for you?**

Please pray for our new Committee, pray that they persevere in the Gospel and keep looking outward. Pray that we can keep growing in being outward focused, visible, accessible, shepherding and mission-minded.

**Conferences / Events**

List 3 strategically important reoccurring or one-off conferences / events you run for your campus group.

Event Name	Why this event is important to your campus group
Weekly bible studies	It allows students to go through the bible and comprehend what it is saying and how they can apply it to their lives. It equips students with the skills to be able to read the bible for themselves. Lastly, it gives students the opportunity to grow in their faith, wisdom and knowledge of Christ Jesus.
Welcome stalls	At the beginning of each semester, we hold a welcome stall on campus as a way to reach out to other students and especially new students that are starting at university. It is a great way for the current members of CBM to build their confidants in talking to others able the christian faith and what that means for them personally.
Pizza and Movie night	Running a pizza and movie night is a great way to connect and evangelises to students on campus as it is through a social event that majority of people enjoy doing – eating pizza and watching a movie. We had a number of students turn up that had not heard of CBM and it was great to talk to them about Jesus.
MYC/AnCon Attendance	7

**About your Campus**

As we think about the AFES mission in terms of evangelise, encourage, train and send, write one or two sentences about the strengths, weaknesses and opportunities of each of these areas.



**Strengths, Weaknesses and Opportunities:**

<b>Evangelise</b>	As we are a small group on campus, it is sometimes hard to evangelise as there is only around five of us that are talking to classmates. However, we have seen our group grow over the past year through those one or two other students that come along.
<b>Encourage</b>	As we are a small group on campus it allows us to really get to know each other and to be an encouragement to each other. As a group we culturally encourage and keep each other accountable to remaining in our faith, and we can do this because we have taken the time to build the relationships.
<b>Train</b>	Through connections to the local churches in the area we have held cross-cultural training days where the students learn what the cultural differences are, so they can be aware not to offend when interacting with students of different cultures. Especially since western Sydney is very multi-cultural.
<b>Send</b>	The majority of CBM members are coming to the end of their studies and we are sending them off into the world equipped with skills and the confidence to continue proclaiming Jesus to the nation.

**What are the main ways your group evangelise on campus?**

Having bible studies in common students areas so other students are welcome to join and listen in to what we are talking about.

Encouraging CBM members to talk to their classmates and invite them to join us for bible study and social events.

Holding welcome stalls that majority of the time has a question that we put out to the students to think about Jesus and the christian faith.

**As a group, what are you finding tough?**

The low number of students in CBM, as this puts a lot of pressure on the current members to be the ones that are always running the events. As much as we want to do more as a group we need to be mindful of not burning out the current members.

**If known, what are some your plans for 2025?**

As the core members are graduating at the end of 2025, next year will be a time to focus on training the newer members, so they are equipped to take over CBM. Along with praying that the group increases in numbers

**How does your group use AFES *PrayerNet* to pray for other groups?**

The president submits prayer requests each month but as a group we do not look at it to pray for others

**How can we pray for you?**

Please pray that there would be more students join our group in 2025 so that CBM at Bankstown and Liverpool campus would continue to thrive and proclaiming Jesus to the other students.

**Conferences / Events**

List 3 strategically important reoccurring or one-off conferences / events you run for your campus group.

Event Name	Why this event is important to your campus group
Bible Studies	We want to encourage growth towards Christian maturity within our bible study group, and provide an opportunity to care and pray for our members.
Evangelistic Stall (Bubble Tea & Chats)	We believe it is important that other students at our University Campus hear the gospel. This event allowed us to have casual chats about Christianity, answer any questions students may have, and openly share our faith over bubble tea.
Dialogue Dinner	During our dialogue dinner, a CBM student was able to share her testimony. and a talk on "Why your Spiritual Life Matter: Finding purpose in Christ" was given. Students were also able to talk among their tables about different topics about their own faith and personal values. Students were also able to meet new CBM students and develop friendships.
MYC/AnCon Attendance	11

**About your Campus**

As we think about the AFES mission in terms of evangelise, encourage, train and send, write one or two sentences about the strengths, weaknesses and opportunities of each of these areas.



**Strengths, Weaknesses and Opportunities:**

<b>Evangelise</b>	<p>We have many opportunities to evangelise on our campus which is a strength. We had 3 evangelistic events during semester 2 including:</p> <ul style="list-style-type: none"> <li>-Pancake stall (students were able to answer a question on our canvas while they waited for their pancake)</li> <li>-Bubble tea and Chats</li> <li>-Dialogue Dinner</li> <li>-NTE Mission</li> <li>-Students were also able to invite a couple of their non-Christian friends to bible study.</li> </ul> <p>However, sometimes it is hard to coordinate with the University about logistics, in terms of the location of our stall on campus and equipment we may need for the stall.</p>
<b>Encourage</b>	<p>We have many opportunities to encourage CBM students during our Bible studies, and many other CBM events we have during the year.</p>
<b>Train</b>	<p>Katie Balestri and Lesley Pidgeon are the AFES Staff Workers on our Campus. Both have been meeting up with students individually to train students on how to lead and prepare Bible studies, and how to live for Jesus and his people. We also had a CBM Launch Day combined with CBM Penrith at the beginning of the year, where we were able to be trained on how to prepare bible studies on the book of Hebrews, and what the overall theme of Hebrews was about.</p>
<b>Send</b>	<p>During our MYC, we were able to pray for and send University graduates to proclaim and serve Jesus wherever they are. Some of our graduates are international students, and we encourage them to share the gospel and equip their Church when they arrive back home.</p>

**What are the main ways your group evangelise on campus?**

- Evangelistic Stalls (Pancake stall, Bubble Tea and Chats, CBM Picnic Socials)
- Bible studies (inviting non-Christian friends)

**As a group, what are you finding tough?**

During the year we found it hard not having a male staff worker to train and encourage male CBM students. But next year we will be having a male staff worker with us :)

**If known, what are some your plans for 2025?**

Unsure

**How does your group use AFES *PrayerNet* to pray for other groups?**

.

**How can we pray for you?**

- Thank God for the new male staff worker coming next year (CBM Campbelltown have been praying for many years)
- Thank God for the new students who have joined CBM Campbelltown who are eager to grow, and help with events.
- Thank God for the many opportunities we had to share the gospel on campus and develop friendships
- Please pray that male CBM students would be willing to be trained up in Character and Ministry with our new male staff worker next year
- Please pray that more students will join CBM Campbelltown, to grow in their faith and maturity in Christ

**Conferences / Events**

List 3 strategically important reoccurring or one-off conferences / events you run for your campus group.

Event Name	Why this event is important to your campus group
Orientation Week	<p>This was important to:</p> <ol style="list-style-type: none"> <li>1. Find Christian students new to the university</li> <li>2. Tell the gospel to students as they walk past</li> <li>3. Hand out Bibles to those who did not want to talk</li> <li>4. Train students how to do evangelism</li> </ol>
Gospel Tract Handouts	<p>This was important to:</p> <ol style="list-style-type: none"> <li>1. Try and get the gospel in the hands of as many students as possible</li> <li>2. Involve Christian students in an easy walk-up evangelism situation.</li> </ol>
Mid-Year Conference	<p>This was important to:</p> <ol style="list-style-type: none"> <li>1. Encourage and challenge students from God's word</li> <li>2. Build deeper relationships with the students</li> </ol>
MYC/AnCon Attendance	11

**About your Campus**

As we think about the AFES mission in terms of evangelise, encourage, train and send, write one or two sentences about the strengths, weaknesses and opportunities of each of these areas.



**Strengths, Weaknesses and Opportunities:**

<b>Evangelise</b>	<p>Strengths: We told the gospel to many students. Good training program and gospel presentation.</p> <p>Weaknesses: Students relied on us bringing non-Christians to them rather than them engaging Non-Christians on their own</p> <p>Opportunities: Walk-up evangelism. More intentionally telling the gospel alongside other students</p>
<b>Encourage</b>	<p>Strengths: Students were somewhat regular at Bible Studies and ran well.</p> <p>Weaknesses: Lack of depth in Bible teaching due to the Bible Talks not being run</p> <p>Opportunities: Bringing back the Bible talks next year.</p>
<b>Train</b>	<p>Strengths: Discipleship/Evangelism Training was emphasised.</p> <p>Weaknesses: Training people how to follow up with a new believer, run Bible Studies and read the Bible with people needs work</p> <p>Opportunities: More training next year on reading and teaching the Bible to others.</p>
<b>Send</b>	<p>Strengths: Emphasised at MYC and a few times in Bible Studies</p> <p>Weaknesses: This is our weakest area since we do not mention it as often as the other areas.</p> <p>Opportunities: More explicit teaching next year.</p>

**What are the main ways your group evangelise on campus?**

Broadly: Handing out Bibles at O Week and starting a conversation. Also, a week handing out gospel tracts near the train station to students.

Individually: Telling the gospel to Non-Christians who come to Bible Studies. Some know they are not Christian, but most are unaware that they do not have saving faith in Christ. We also encourage students to meet up with classmates with the intention of telling them the gospel.

**As a group, what are you finding tough?**

Low numbers of students on campus due to students working or having online classes. The university also limits where we as a club can advertise our group and hand out things to students.

**If known, what are some your plans for 2025?**

Re-introduce the Bible Talks on campus. Continue and build upon the same evangelism techniques from last Semester. Continue seeking to make disciples that make other disciples of Christ.

**How does your group use AFES *PrayerNet* to pray for other groups?**

We mostly have used it for providing prayer points for our public meetings.

**How can we pray for you?**

Thank God for the people who became Christian this year and that we can continue to follow them up. Pray for a female staff worker and that students will be bolder in telling the gospel.

**Conferences / Events**

List 3 strategically important reoccurring or one-off conferences / events you run for your campus group.

Event Name	Why this event is important to your campus group
Mid-Year Conference	For 5 days, we gather together to look in-depth at God's Word, to be trained to understand a topic systematically, to be trained in how to read the Bible better, have our eyes lifted to global mission and think about our role in sharing Jesus with the world.
Easter Mission	At Easter we run a stall which we get all Bible study groups to run throughout the week. It gives us an opportunity to train every member in how to share the gospel with others, as well as practical experience and confidence in doing so.
NTE Mission	This allows us to train and give our students experiences in ministry or contexts that they have not had before, and send them back to their campus and church with greater skills and enthusiasm to serve.
MYC/AnCon Attendance	14

**About your Campus**

As we think about the AFES mission in terms of evangelise, encourage, train and send, write one or two sentences about the strengths, weaknesses and opportunities of each of these areas.



**Strengths, Weaknesses and Opportunities:**

<b>Evangelise</b>	We have several heightened mission weeks each year where we involve all students in sharing the gospel, particularly at stalls and inviting friends to bible talks. A real strength is that every member gets trained and involved, and we have multiple great conversations every time. We also have a strong culture of praying for our non-Christian classmates, doing it for instance at every Bible talk. We still would like to improve students more proactively inviting friends, and for some students this includes getting to know members.
<b>Encourage</b>	Our students are regularly encouraged through faithful Bible teaching at our Bible talks, Bible studies and one-to-one ministry. It is evident students are growing, especially from their keenness to invite other Christian friends along. One member even picks up a friend from her uni 90 minutes away and drives her just so she can make our Bible talk (we have encouraged her to be involved with her local affiliate by the way)
<b>Train</b>	We are currently training in evangelism in Bible studies before our mission weeks each semester, and give practical experience at our stalls. We train people to be Bible study leaders in our Bible studies and meeting 1-2-1 with staff, and training in doing talks and testimonies is a major part of our NTE mission.
<b>Send</b>	We farewell students at the end of every year in Bible studies, conferences and an end of year dinner, praying for them and encouraging them in their serving with Jesus. Our Bible talks and MYC regularly encourage students to think about how they will use their lives to serve Jesus.

**What are the main ways your group evangelise on campus?**

Mission weeks in each semester, particularly structured around mission stalls at Easter and a second topic in semester 2. We also foster a strong culture of prayer for non-Christian classmates and encourage everyone to invite their friends to Bible studies and Bible talks.

**As a group, what are you finding tough?**

Our campus is shrinking significantly and there are very few students on campus both throughout the semester, and in the first week when we would normally get the bulk of our new members.

**If known, what are some your plans for 2025?**

Mid-Year Conference on the Cross of Christ, New NTE mission at Sadleir Anglican

**How does your group use AFES *PrayerNet* to pray for other groups?**

We pray for other groups several times at Bible talks throughout semester; some bible study groups use it every few weeks for prayer groups, and we use it as part of our prayer meetings that are run once or twice a semester.

**How can we pray for you?**

Please pray that our students will be bold in inviting Christian and non-Christian events, and for numbers on campus to return.

**Conferences / Events**

List 3 strategically important reoccurring or one-off conferences / events you run for your campus group.

Event Name	Why this event is important to your campus group
Friday Night Connect	This is our main event each week with a bible study and bible talk and dinner. This is a key event for connecting and bible study
Gospel Triplets	This is where we read the bible with non christians in triplets
Mid Year Getaway	Our annual camp
MYC/AnCon Attendance	30

**About your Campus**

As we think about the AFES mission in terms of evangelise, encourage, train and send, write one or two sentences about the strengths, weaknesses and opportunities of each of these areas.



**Strengths, Weaknesses and Opportunities:**

<b>Evangelise</b>	Gospel Triplets, Friday Night Connect, Christianity Explored courses
<b>Encourage</b>	One on One's, bible study, Friday night connect
<b>Train</b>	Friday Night Connect, Bible study, Mid Year Getaway
<b>Send</b>	Mid Year Getaway teaching, Friday Night Connect, One one One's

**What are the main ways your group evangelise on campus?**

Friday Night Connect, Gospel Triplets, Christianity Explored

**As a group, what are you finding tough?**

We lost 10-12 students graduated last year, which was significant in terms of leaders.

**If known, what are some your plans for 2025?**

Friday Night Connect, Mid Year Getaway

**How does your group use AFES PrayerNet to pray for other groups?**

We use it some times at Friday Night Connect

**How can we pray for you?**

Pray for our new committee as they start

Pray for Jenny Bradshaw who is leaving us this year and starting with Wycliff translators next year

**Conferences / Events**

List 3 strategically important reoccurring or one-off conferences / events you run for your campus group.

Event Name	Why this event is important to your campus group
Grow	it is our fortnightly training where we join as a club to open up the bible, and reflect all of our aims in one night
Jesus Week	it is our chance on campus to share the gospel with others in an intentional time of evangelism
Connect Camp	our first contact with students for the year, having time away where we refocus on serving Gpd in the year ahead and prepare new students for uni life and returning students for another year of study.
MYC/AnCon Attendance	28

**About your Campus**

As we think about the AFES mission in terms of evangelise, encourage, train and send, write one or two sentences about the strengths, weaknesses and opportunities of each of these areas.



**Strengths, Weaknesses and Opportunities:**

<b>Evangelise</b>	strengths - we do well at jesus week, our intentional time of evangelism on campus, everyone getting involved, and stalls where we engage with lots of non-Christian students  weaknesses - We do not have a regular time or system for students to actively evangelise at uni
<b>Encourage</b>	we encourage each week in our bible study groups, each group will support one another while doing life together, we also encourage each other in our fortnightly trainings. We do every now and again encourage and thanks those who have been exceptional in serving the ES community and campus. We don't often encourage each other with stories of how we are personally growing or smaller, maybe less acknowledged achievements and opportunities.
<b>Train</b>	Every week we have small group training our participants in the bible, what it says, and applying it to our lives. we have a fortnightly training night where we have a message brought to us from the bible with application points, we also have a workshop aspect of these training nights where we can develop more hands on and practical skills. We have training for our student leaders before each semester, both new and returning leaders. Our staff meet up regularly with leaders to help train and disciple them.
<b>Send</b>	We have very few opportunities to send our students out. We like to hope we have prepared our graduates when they leave us at the end of the year sending them out into the world to serve and support. We also encourage our students to serve the wider church over the summer in different volunteer opportunities.

**What are the main ways your group evangelise on campus?**

We have Jesus week and Stalls which are run regularly throughout the year.

**As a group, what are you finding tough?**

most of our leaders and staff are giving a lot and despite our numbers are growing, people are not regular enough to support the rising demand

**If known, what are some your plans for 2025?**

exploring the possibility of continuing the theme of Meet Jesus

**How does your group use AFES *PrayerNet* to pray for other groups?**

other than individual prayer we dont

**How can we pray for you?**

new committee members as they embark on their new roles, for new staff workers as our current staff workers are burning out, and need more help.



**Conferences / Events**

List 3 strategically important reoccurring or one-off conferences / events you run for your campus group.

Event Name	Why this event is important to your campus group
Jesus Week	As a week of heightened evangelism on campus, it prompts many great opportunities to share the gospel with our friends. In 2024 we performed the Mark Drama on three nights, where we showed the life of Jesus performed on stage by students, and many non-Christian friends came along and had further conversations because of it.
Mid Year Conference	Although open to any, Mid Year Conference is especially a time for equipping ESers through good quality biblical content (2024's theme was Union with Christ), through discussion groups (2024's task was an exegesis of Romans 5), and through community as we spend time and meals together. It also helps to get many members on the same page about our campus mission before big events like Jesus Week.
Faculty Camps	Bible study groups and many outsider-friendly social events during the terms are run on a faculty basis in the club. Faculty camps help members of a given faculty to know one another better, and to plan ahead for activities that would be helpful for friends in their types of courses and communities. They're also a lot of fun!
MYC/AnCon Attendance	96

**About your Campus**

As we think about the AFES mission in terms of evangelise, encourage, train and send, write one or two sentences about the strengths, weaknesses and opportunities of each of these areas.



**Strengths, Weaknesses and Opportunities:**

- Evangelise** Strength: The Uncover John National Mission helped many students to be reading the bible with a non-Christian friend, and many more students to pick up the courage to ask.
- Weakness: Jesus Week bible talks, although openly evangelistic, didn't see many students invite non-Christians to attend (generally bible talks have serviced ESers more than non-Christians).
- Opportunity: An evangelistic stall that we ran in the final week of classes saw lots of fruit as strangers had conversations about the gospel, Jesus, and who we are as a club. Stalls are an area of opportunity into the future, to share the gospel and increase our visibility on campus.
- 
- Encourage** Strength: Commencement and Faculty camps, as well as MYC, encourage many ESers in their faith. Staff workers are also an excellent opportunity to be encouraged, as many ESers are reading the bible together with a mission apprentice or staff worker.
- Weakness: We must be on guard against forming groups or cliques which become their own social circle. While it's easy for integrated people to feel welcome, we must make sure to be welcoming and generous so that those on the periphery can feel welcome too.
- Opportunity: To target a different weakness (that of declining bible study group attendance throughout a semester), we could perhaps prioritise some time for interpersonal 'pastoral care' in bible study groups, because they often have time only for the study, but no more.

<b>Train</b>	<p>Strength: ESers consistently report learning a lot about how to lead a bible study during BSG leader training, or how they've learnt to read the bible better through their involvement in the bible talks or on camps.</p> <p>Weakness: Perhaps accessibility to training for those who have complicated or busy uni timetables.</p> <p>Opportunity: An opportunity to be trained in evangelism exists in our program called Nucleus, and opportunities to connect with international students exists in connection with our sister-club FOCUS, as well as programs like C3 and 'Talking with Aussies'.</p>
<b>Send</b>	<p>Strength: There is a mission prayer group where the needs of missionaries are prayed for, CV conference is promoted prompting ESers to consider vocational ministry, and many ESers are active members of their local churches (also, post-NTE mission!).</p> <p>Weakness: Not quite sure sorry!</p> <p>Opportunity: (This might not be quite 'send', but) we probably have opportunity to collaborate more with FOCUS, and/or ES groups at other unis in Adelaide. I've heard also that equipping ESers that find themselves at the residential colleges can be helpful too.</p>

### **What are the main ways your group evangelise on campus?**

The main way was through the uncover John initiative, as we asked ESers to prayerfully invite 3 uni friends to read uncover John with them. This resulted in some real Christian-to-non-Christian evangelism opportunities. Also, there is a walk-up evangelism group. Furthermore, in each semester, faculties usually have at least one evangelism-focused event (dialogue dinners, debates/panel discussions, etc.).

### **As a group, what are you finding tough?**

We have plenty of volunteers and people willing to help out across the year among our students. We have found things that work on campus (the stall, the mark drama, dialogue events). We are very able to be encouraged and trained ourselves (camps, especially MYC, and BSG-leader training). However, there can still be a sense of malaise or despondency if our own friends remain difficult to invite to ES events, if there aren't many non-Christians that come along to evangelistic initiatives, if numbers in bible study groups and at the talks drop during the semester as uni gets busy, and if there doesn't seem to be much visible evangelistic fruit (even though there is some!).

### **If known, what are some your plans for 2025?**

In 2026, the University of Adelaide and UniSA will merge into a new institution: Adelaide University. Given this merger, we've got the freedom to try some new things in 2025, to see what works and see what doesn't before this massive context-shift. Some plans are a fairly significant organisational restructure (streamlining communication from exec to other students, considering whether faculty divisions should play a continued role, changing the week's ES timetable to have BSG's at 1 or 2 common times), and perhaps to continue the 242 and Uncover John club focusses into 2025 with a similar drama-based Jesus Week. Those are some of the things we've heard and thought about.

### **How does your group use AFES PrayerNet to pray for other groups?**

I don't know if we do (correct me if we do!).

**How can we pray for you?**

- That structural changes made next year would bear fruit (in clearer communication and student ownership).
- That real evangelistic fruit would be seen, that people may be saved, and to see it become easier to invite non-Christians to regular ES events.
- That exec and students would be willing to try new things that could see more people reached for Christ.
- That we would be welcoming to outsiders, and visible on campus (known widely).
- That God's Spirit would overcome any feeling of malaise that can come with decreasing bible study or bible talk attendance over a semester or lack of evangelistic fruit, and that He would constantly breathe new vigor in this campus mission.

**Conferences / Events**

List 3 strategically important reoccurring or one-off conferences / events you run for your campus group.

Event Name	Why this event is important to your campus group
Monday Night Ministry	MNM (Monday Night Meetup) is an essential event for Evangelical Students (ES), serving as a cornerstone of community and spiritual growth. This reoccurring event takes place every Monday evening and draws a significant number of university students who actively participate. The importance of MNM lies in its role as a dedicated time for fellowship, worship, and engaging discussions that deepen faith and encourage the sharing of the gospel. It provides a consistent opportunity for students to connect, support one another, and be inspired to live out their beliefs on campus and beyond. MNM’s regularity and strong attendance make it a crucial event for fostering unity and building lasting relationships within the ES community.
Leadership Conference	The Leadership Conference is a pivotal annual event for Evangelical Students (ES), dedicated to nurturing new incoming leaders and reinforcing connections within the broader community. This once-a-year gathering provides a unique opportunity for attendees to develop essential leadership skills, gain valuable insights, and deepen their understanding of effective ministry. It plays a crucial role in equipping emerging leaders to take on responsibilities confidently and with a solid biblical foundation. Beyond training, the conference fosters meaningful connections among participants, creating a supportive network that extends throughout the year.
Individual Campuses Camp in UniSA.	The Individual Campuses Camp at UniSA plays a vital role in fostering connections among students from the same campus and serves as an effective icebreaker for new students joining Evangelical Students (ES). This dedicated camp creates a welcoming environment where students can build meaningful relationships through shared experiences, worship, and discussions tailored to their campus context. It offers new students an accessible entry point to integrate into the community, feel a sense of belonging, and establish supportive friendships. The camp not only strengthens bonds within individual campuses but also encourages deeper engagement in the broader ES activities throughout the academic year. Its role in creating a cohesive, connected campus community makes it an invaluable part of the ES experience.
MYC/AnCon Attendance	96

**About your Campus**

As we think about the AFES mission in terms of evangelise, encourage, train and send, write one or two sentences about the strengths, weaknesses and opportunities of each of these areas.



**Strengths, Weaknesses and Opportunities:**

<b>Evangelise</b>	Strengths include active outreach events drawing interest; weaknesses involve limited follow-up with attendees. Opportunities lie in innovative digital evangelism strategies.
<b>Encourage</b>	Strong peer support builds community; however, balancing spiritual growth with academic pressures is challenging. Opportunities exist in mentoring programs for deeper bonds.
<b>Train</b>	Effective training equips committed leaders; a weakness is insufficient reach to potential new leaders. Workshops offer opportunities for broader engagement.
<b>Send</b>	Strength in sending well-prepared leaders; challenges include maintaining long-term mission support.

**What are the main ways your group evangelise on campus?**

The main ways our group evangelizes on campus include hosting Monday Night Meetups (MNM), which provide a welcoming space for students to explore faith through worship, discussions, and community. Additionally, Snack and Chat sessions are key for fostering connection with international students, offering a friendly, informal environment to build relationships and share the gospel in an approachable way.

**As a group, what are you finding tough?**

NA

**If known, what are some your plans for 2025?**

NA

**How does your group use AFES *PrayerNet* to pray for other groups?**

Our group utilizes the AFES PrayerNet as a vital resource to stay informed about the prayer needs of other campus groups across Australia. By regularly accessing the monthly prayer points provided in PrayerNet, we incorporate these requests into our group

**How can we pray for you?**

Please pray for boldness in our evangelism efforts, particularly through Monday Night Meetups and Snack and Chat. Pray for unity and encouragement within our community, effective leadership training, and that we may equip and send leaders who impact their future fields. Also, pray for meaningful connections with international students exploring faith.



**Conferences / Events**

List 3 strategically important reoccurring or one-off conferences / events you run for your campus group.

Event Name	Why this event is important to your campus group
Easter Stall	This once a year event had ESers handing out dark chocolate on good Friday having evangelistic conversations with students about how Jesus death is bittersweet. It was important as it was a good opportunity for students to put into practice evangelising in a supported environment.
Retreat	Mawson Lakes and Magill ESers went away together on a three-day beach trip. This was a great way to combine both small campuses, for ESers to make connections, friends, build community and grow in their biblical knowledge.
Bible Study Group	These weekly meetings enable students to build connections, friendship and community and most importantly teach students how to study the bible, pull out the key ideas and themes and apply them to their lives.
MYC/AnCon Attendance	10

**About your Campus**

As we think about the AFES mission in terms of evangelise, encourage, train and send, write one or two sentences about the strengths, weaknesses and opportunities of each of these areas.



**Strengths, Weaknesses and Opportunities:**

<b>Evangelise</b>	Easter Stall
	At this once-a-year event ESers have evangelistic conversations with students guided by this year's theme of why is good Friday bittersweet like dark chocolate?
	Jesus Week Stall
	At this once-a-year event ESers have evangelistic conversations with students guided by this year's national theme meet Jesus.
	Snack and Chat
	At this once-a-year event ESers have evangelistic conversations with students guided by a weekly question about cultural differences and celebrating these differences.

---

**Encourage** Social Catch Ups

Once a term a social event is organised for ESers to attend. Supporting them in fostering and building Godly friendships and community. ESers can vote on an event like bowling, picnic or dinner.

**Retreat**

At this once-off event, Mawson Lakes and Magill combined and went on a three-day beach trip. Encouraging students in their faith and also training students how to use the Uncover John series in the lead-up to the national event of Meet Jesus.

**Commencement Camp**

At the start of the year, ESers can attend a camp encouraging students before they commence their studies to go deeper with God through worship, bible talks and small groups.

**Mid Year Conference**

In the middle of the year, ESers can attend a camp encouraging students before they commence semester 2 studies to go deeper with God through worship, bible talks and small groups.

**National Training Event**

At the end of the year, ESers can attend a camp encouraging students before they commence summer holidays to think about and put into action evangelistic opportunities.

---

**Train** 1-on-1 mentoring

Once a week each ESer has an hour with a staff member to help students grow in their personal faith. This is largely student-led as ESers are able to choose how they spend this time to grow their knowledge in a certain area, for example they could spend the time reading through literature or having faith-based discussions with that staff member to better understand a topic of interest to them

**Bible Study Group**

Returning/mature in faith students are asked to lead a bible study group for the term. Supported by a staff member these students are trained before hand and on the job to lead a group. They learn about group dynamics, leading a group, directing questions and how to study the bible.

**Tuesday Night Training**

Lead by student voice, ESers brainstorm biblical topics they would like to know more about and then twice a term a staff member will present a small talk/ workshop on that topic. This helps train students in how to study the bible and how to practically apply the key them and ideas on their lives.

**Retreat**

At this once-off event, Mawson Lakes and Magill combined and went on a three-day beach trip. Encouraging students in their faith and also training students how to use the Uncover John series in the lead-up to the national event of Meet Jesus.

---

**Send** Students are encouraged to serve in any capacity they can within their own church, however, this may look.**Interviews**

When there is an ES promotional event on staff members encourage ESers to participate and serve in some capacity whether that may be serving food at an event or saying a prayer, being interviewed about their experience at ES or representing ES at an event and having conversations with the people there.

**National Training Event**

Students are encouraged assigned to serve in a church group, reaching the community through social events and evangelistic conversations.

---

**What are the main ways your group evangelise on campus?**

Through weekly events like Snack and Chat, and once-off events like Jesus week stall/easter stall. Students are always encouraged to invite their non-Christian friends to social events, BSG and etc.

**As a group, what are you finding tough?**

Limited student availability with online lectures, student placements and changing timetables.

**If known, what are some your plans for 2025?**

Evangelism training over summer, BSGs (genesis 1-12), and chaining our training for student leaders to lead these studies well, and hopefully restarting regular international student outreach (snack and chat).

**How does your group use AFES *PrayerNet* to pray for other groups?**

Unfortunately we don't use PrayerNet. A few years ago, we had a fairly consistent prayer meeting and used PrayerNet every few weeks, but we haven't managed to use it since then.

**How can we pray for you?**

Prayer would be greatly appreciated for.....

Regular attendance from students - that they would prioritise ES commitments, timetables wouldn't prohibit their attendance and be bold enough to invite nonChristian friends to ES events.

Leaders - As the new year comes the right students would be put in the place of leadership to help run the ES group and take on bible study leading responsibilities. That they would have the boldness to step up into these positions and that they would feel equipt to do so.

Graduating students - As they enter the work force they would plant themselves in a strong Christian community, prioritise daily time spent with God and seek out evangelistic opportunities within their work place.

Staff Members - being a small campus our staff members shoulder a lot of responsibility in organising events. Prayer that the work load would be manageable, there would be the opportunity and funding for staff to be on campus and extra day next year and that they would be encouraged spiritually.



**Conferences / Events**

List 3 strategically important reoccurring or one-off conferences / events you run for your campus group.

Event Name	Why this event is important to your campus group
Main Meeting	Main meetings are the lifeblood of the group. Students and staff gather weekly to hear the Word preached, and to engage in a session that seeks to encourage, evangelise, train, and send.
O-Week Stalls	These are significant events held twice per year to increase visibility on campus and invite new students into the group.
Mid-Year Camp	For many students, a potentially life-changing encounter with the one true God, and spurring on Christians to live wholeheartedly for the King in light of His amazing grace learnt about through the Scriptures.
MYC/AnCon Attendance	30

**About your Campus**

As we think about the AFES mission in terms of evangelise, encourage, train and send, write one or two sentences about the strengths, weaknesses and opportunities of each of these areas.



**Strengths, Weaknesses and Opportunities:**

<b>Evangelise</b>	<p>S: Numerous Christian students have initiated Bible study groups with non-Christians. This has led to several professions of faith!</p> <p>W: Evangelism could be more embedded into the culture of the group, and actively pursued as a group both in organised events and organically.</p> <p>O: Opportunities to address the above might include participating in walk-up evangelism, or explicitly encouraging capable students to initiate and lead Bible studies with non-Christians, in prayerful dependence upon God.</p>
<b>Encourage</b>	<p>S: Christian students make time to pray together, and prayer is incorporated into all corporate gatherings. Across both semesters, some students ran weekly prayer groups to encourage each other in praying for the lost.</p> <p>W: Forming deeper relationships within the group so that, letting the Word of Christ dwell in us richly, we might be able to speak the truth of the Word into each other's lives on a deeper level beyond weekly main meetings.</p> <p>O: There are opportunities to create more intentional time of spending time in the Word together outside of main meetings, whether this occurs organically on campus, or in a more structured fashion, including during the holiday periods.</p>
<b>Train</b>	<p>S: Students and staff partner together in running 1st year Bible studies, and in running evangelistic events, enabling students to learn from the staff.</p> <p>W: With reduced staff, at times difficult to run extra theological training courses which have been offered in previous years.</p> <p>O: Opportunities for student leaders to continuing taking on greater responsibility, including through leading training courses.</p>

**Send**

S: There is an awareness in the group of previous Griffith Brisbane students who have been sent and continue to faithfully labour for Jesus. This fosters an expectation of the importance of being sent with the gospel.

W: Could be more of a sense of sending ongoing students off for the cause of the gospel during holiday breaks, not only for graduating students

O: Opportunities to think more in depth about living life on university NOW in light of being sent later. i.e. making the most of the time allotted to us. Could be helpful in this respect to hear from recent graduates at our Main Meetings to consider their advice on how to make the best use of time on campus before graduating.

**What are the main ways your group evangelise on campus?**

1. Student Leaders forming ABC Bible study groups.
2. Students inviting friends to Main Meetings to hear the Bible talk
3. O-Week stalls

**As a group, what are you finding tough?**

1. Retaining new students as part of the Club throughout the duration of the semester.
2. Attracting new students to join the group in the later parts of the semester
3. Preparing to adapt to the significant changes in staff team

**If known, what are some your plans for 2025?**

Unsure, but the Club will be adapting to a reduced staff-team size and considering the most effective and God-glorifying ways to approach student-staff partnership.

**How does your group use AFES PrayerNet to pray for other groups?**

As a group, the student leaders have used campus prayer points this year during a meeting. Apart from that, the group hasn't advertised the use of AFES PrayerNet amongst the students

**How can we pray for you?**

Pray for blessings on staff worker Chris Brown as he takes on leading multiple campuses, as the staff team size is reduced for 2025.

Pray for the raising up of more gospel workers to labour in this harvest field.

Praise God for amazing gospel fruit, through salvation of souls and through sanctification of believers. Pray that this would only multiply in 2025 and the Griffith Brisbane would grow more effective in reaching more souls with the gospel.

**Conferences / Events**

List 3 strategically important reoccurring or one-off conferences / events you run for your campus group.

Event Name	Why this event is important to your campus group
Main Meetings (Bible Talk)	This is a key platform for the proclamation of Christ on campus. Often our heightened missional efforts will direct newcomers and explorers to attend a Main Meeting. It is also the glue for the group. Though we meet in small (3-4 people) groups throughout the week in our ABC Bible studies, Main Meeting is the central gathering where we hear, pray and respond to God's Word as a united people under the Lordship of Christ. It also plays a key role in building relationships with each other, and staying informed about socials and events such as MYC and NTE.
One-off Mission Talk (given by Guest Speaker off-campus)	Lots of our activities on campus were shaped around the first 4 weeks of mission in trimester 2. Throughout trimester 1, we were trained in Uncover John in our ABCs and had listened to a series of talks from the gospel of John. In Trimester 2, we had an evangelistic 'Meet Jesus' series of talks over the weeks, advertised from walk-up, tram stop invites, social media, and personal invites. The talk acted as a culmination of the relationships built over the weeks to call people to faith. Having partnered with local churches (aimed for university ages still), many young church attendees brought their friends to explore the claims of Jesus. Having it off-site and at night enabled many students to attend (and find a park!).
MYC	MYC is an intensive period of growth for the campus as a whole and its individual members. Relationships with other students are formed and strengthened (it also acts as a great opportunity for GCS students who attend Tuesday Main Meetings to meet GCS students from the Wednesday Main Meeting). The stretching talks from the guest speaker at night and workshops from the staff workers provide rare teaching opportunities that most Christians aren't privileged to experience. It also gives students intentional, undivided time and space to enjoy fellowship with God. Students are also trained to facilitate the Bible study groups which enables them to take ownership in their desire to see their faith, and the faith of others grow in maturity in Christ. MYC also acted as a launch/preparation for the upcoming mission week for that trimester.
MYC/AnCon Attendance	38 from Griffith Gold Coast

**About your Campus**

As we think about the AFES mission in terms of evangelise, encourage, train and send, write one or two sentences about the strengths, weaknesses and opportunities of each of these areas.



**Strengths, Weaknesses and Opportunities:**

**Evangelise** Strengths: Students were bold in walkup, tram invites, and BBQ outreaches.  
 Weaknesses: Not many students are involved in evangelism.  
 Opportunities: Creating a more intentional culture of evangelism.

<b>Encourage</b>	<p>Strengths: The sense of community at GCS is pretty good. Many exchange students will often become quickly involved and core to the group.</p> <p>Weaknesses: Lots of the students tend to feel at (if not over) capacity due to the nature of their degree or their commitments at church/gcs or work. Therefore attendance is often a struggle.</p> <p>Opportunities: Intentionality in caring for the students, and making them feel that they are given opportunities to serve, not burdens to bear.</p>
<b>Train</b>	<p>Strengths: Recent change in 'equip' structure has allowed students to come more consistently and think deeply about a particular topic. MYC and Main Meetings also incorporate training.</p> <p>Weaknesses: Often get low numbers at the equips.</p> <p>Opportunities:</p>
<b>Send</b>	<p>Strengths: Host a 'Grads Farewell' dinner every trimester for leaving students that has a Bible talk directed to an audience of graduating students. FOCUS (international student christian group) is very intentional in their goals and strategies to train international and exchange students so they may share the gospel in their home country.</p> <p>Weaknesses:</p> <p>Opportunities:</p>

**What are the main ways your group evangelise on campus?**

Every trimester we do an outreach BBQ. Walk-up, socials, campus group tables, and evangelistic events occur during O-week and trimester 2 mission-week.

**As a group, what are you finding tough?**

Praise God that He is always good to us, growing and sanctifying us through trials and dryness, and sovereign in his plans for salvation. He gave us great encouragement in a significant increase in numbers this year. Many of the student leaders feel burned out and it is perceived that some students are only attending at a social level.

**If known, what are some your plans for 2025?**

Not known. Focusing on raising younger leaders as lots of the current leaders will graduate in 2025.

**How does your group use AFES PrayerNet to pray for other groups?**

Mainly during prayer meetings.

**How can we pray for you?**

That God's Kingdom would be powerfully alive and active at Griffith Uni Gold Coast, strengthened by the Lord Himself. That students' hearts would be transformed by His grace to desire His will - seeking the growth of their faith and the faith of others, and that Christ is glorified in their lives. Also please pray for the sustenance of the blessing that is our staff workers.

## Conferences / Events

List 3 strategically important reoccurring or one-off conferences / events you run for your campus group.

Event Name	Why this event is important to your campus group
Bible talks	A regular weekly Bible talks through both semester 1 and 2. The aim of this regular event was to present students the good news about Jesus as our saviour. We challenged students in semester 1 as we worked through the book of John and in semester 2 with the theme of "Meet Jesus in the wilderness" we explored the book of numbers. We wanted to strengthen Christian students in their faith, helping them to love and serve God and all others around them. These served to help them understand what it looks like to acknowledge Jesus as Lord and live in accordance with this. This also provided a place for students to invite friends and classmates to and explore these topics further. Each week we had dinner together to help facilitate these discussions.
Coffee and easter stalls	These events have started to become a regular part of the club's calendar and allow other students to know about our club on campus. These stalls also help students apart of the club to encourage non christian friends to meet Jesus in casual events. These events allow an easy invite to other events like the bible talks and ABC groups.
Kick off Camp and Mid Year Camp	In semester 1 we were able to have our kick off camp. This was held in conjunction with the Townsville Christian Students group at Kennedy. This was a chance to hear great Bible teaching and build deep friendships at Cardwell for a weekend camp trip. During the mid semester break we held a Mid Year Camp at Quinola Lakes with the Townsville Christian Students group. We were able to hear from a guest speaker, hold some Bible studies together, have topical seminars, and enjoy fellowship.
MYC/AnCon Attendance	3

## About your Campus

As we think about the AFES mission in terms of evangelise, encourage, train and send, write one or two sentences about the strengths, weaknesses and opportunities of each of these areas.



### Strengths, Weaknesses and Opportunities:

<b>Evangelise</b>	As a club we have been able to set up events that help the start the process of evangelism on campus but currently there seems to be a bit of a hard group culture that limits the personalised invites to friends.
<b>Encourage</b>	As a club we are encouraged well by the bible talks and prayer meetings as well as regular meetings throughout the year with other clubs as well as seeing each other around university.
<b>Train</b>	At the moment we are formally trained through two camps a year which are really helpful in seeing how we can engage the wider JCU community. However we find it hard to keep this excitement and engagement throughout the year.
<b>Send</b>	This year we started to interact with past graduates and pray for graduates who have left in the year just past, as well as incorporating a past grad segment in our AGM which helped to demonstrate how graduates can be sent from our group. However, it is hard to keep older year students connected with the group when they leave on placement.

**What are the main ways your group evangelise on campus?**

through stalls, invitations to the bible talks, participating in O week activities and encouraging students to read the bible one to one with friends

**As a group, what are you finding tough?**

In general we are struggling with the fast turn over of students in a small group this means that the group dynamic and culture can change very quickly without us realising that it has changed. This also can mean that if there isn't much interested in one particular year level then the leadership of the club can suffer a lot.

**If known, what are some your plans for 2025?**

To have a mid year mission, adapt to the trimester system that the university is changing to.

**How does your group use AFES *PrayerNet* to pray for other groups?**

we use this as a group once a week at our weekly prayer meetings. Some of our members use this everyday in there private prayer too.

**How can we pray for you?**

That we would continue to run the race and complete the task that the lord Jesus has given us the task of testifying to the good news of Jesus whilst we are on campus. Also we have had several people throughout the year tag along to bible talks who aren't christian, pray that we would not forget that god works during holidays and exams even if we are busy or not on campus.

## Conferences / Events

List 3 strategically important reoccurring or one-off conferences / events you run for your campus group.

Event Name	Why this event is important to your campus group
Kick Off Camp	It helps first years meet people and get a feel for the groups aims and culture.
The Bible Talks	Our regular meeting to hear the Bible together.
Meet Jesus week	It was a chance to invite the whole campus to come and investigate the claims of Jesus.
MYC/AnCon Attendance	28

## About your Campus

As we think about the AFES mission in terms of evangelise, encourage, train and send, write one or two sentences about the strengths, weaknesses and opportunities of each of these areas.



### Strengths, Weaknesses and Opportunities:

<b>Evangelise</b>	We have had a culture of people inviting their friends and non-Christians coming and investigating Christianity with us this semester. However we have had less students doing walk up and initiating evangelism with those we don't know yet.
<b>Encourage</b>	Our group has been smaller than previous years and this has meant people have got to know each other well and encouraged each other to keep following Jesus.
<b>Train</b>	We have had less training this semester as people have felt stretched. This is an area we need to grow in next year.
<b>Send</b>	It's been exciting to have some of our grads come and visit as they head over seas on missionary service this year. We have also had international students with us this semester we are sending back home as well as the students graduating.

### What are the main ways your group evangelise on campus?

Inviting students to hear the Bible in our public meeting. Reading a gospel 1 to 1 or in small groups.

### As a group, what are you finding tough?

Our uni is transitioning to trimesters but it is happening over a number of years. This means that there are some students doing trimester calendar and some on the semester one. This makes it hard to feel connected and build community.

### If known, what are some your plans for 2025?

We have two grads coming back to start AFES apprenticeships with us next year. We are hoping to do the Mark drama. We are planning to keep talking to people about Jesus.

### How does your group use AFES PrayerNet to pray for other groups?

Not very well. Some students receive it.

**How can we pray for you?**

Pray for planning to help reach students in both trimester and semester calendars. Pray for boldness to keep talking to people about Jesus. Pray that students feeling stretched and disconnected would come and be connected with Jesus and be loved in the group.

## Conferences / Events

List 3 strategically important reoccurring or one-off conferences / events you run for your campus group.

Event Name	Why this event is important to your campus group
Mid Year Conference	This event is important to our campus because it is QC's main training and discipleship event of the year. This year's topic was God Made Known: A hope in the darkness. We looked at God's word which is imperishable, revealing, creating and powerful. His word has come in the world in the person of Jesus to give life, transform, reveal and guide. But this is a knowledge that we must be doers and not just hearers of the word as we saw in our MDM groups. This invigorated our commitment to engage in the Meet Jesus campaign in week 4 of Semester 2.
Bible Connect Groups/Training	In semester 1, we held first year and upper year Bible study groups. Both groups delved deep into God's word whether it was in Colossians, or in the context of Ethics and Core Biblical Doctrine. Through all of this, there has been a keen attitude to gather as God's people to think deeply about his word and ask questions so that by His Spirit his Word may transform our actions for tomorrow and beyond.
Launch Camp	Launch Camp is a weekend before the year had begun where many of us were reminded of the strategy of God. To summarise what Paul writes in Ephesians 1, God's goal is to unite all things under Christ by sovereignly drawing people into his Kingdom and sealing them with the Holy Spirit. We looked at God and his mission and how he shares that with us to fulfil and participate in. We were extremely motivated to impart this to new and current uni students as we headed into O-week.
MYC/AnCon Attendance	50

## About your Campus

As we think about the AFES mission in terms of evangelise, encourage, train and send, write one or two sentences about the strengths, weaknesses and opportunities of each of these areas.



## Strengths, Weaknesses and Opportunities:

<b>Evangelise</b>	Meet Jesus walk up was a week of intentional evangelistic centered conversations with strangers and classmates on campus. There was hesitation from some students to engage with something they hadn't done before. We tried to pair with people who had done it before or with BCGs.
<b>Encourage</b>	Through our weekly main meetings. This is a time to come together as students to look to God's word, and be in fellowship with one another.
<b>Train</b>	Bible Connect Groups, Girls and Guys Camp, and Training as a way of equipping all of us to read God's faithfully and share that knowledge with others beyond our time at uni.
<b>Send</b>	It would be helpful to hear how graduates experience living out their faith in Christianity. It would also be helpful to have a network of people from across states and unis and peoples' work may require them to move away from their normal church and uni community.

## What are the main ways your group evangelise on campus?

We evangelise through our annual reach week, social media and walk-up.

**As a group, what are you finding tough?**

Reaching the campus with the good news is a weakness at our campus.

**If known, what are some your plans for 2025?**

Keep ministry simple and focused on proclamation, prayer and people. No practical plans as yet.

**How does your group use AFES *PrayerNet* to pray for other groups?**

We don't use it at a corporate level.

**How can we pray for you?**

Campus group leadership structure will continue to change over the next year. Pray for patience and a stronger commitment to the gospel knowing the God is sovereign and working all things (good and bad) for his purposes according to His will.



**Conferences / Events**

List 3 strategically important reoccurring or one-off conferences / events you run for your campus group.

Event Name	Why this event is important to your campus group
Mid Year Conference	This is a one-week intensive where our entire campus group (plus some people on the fringes or friends of people in the group) learn about one topic (this year we looked at the Church), study a lengthy passage of the Bible (our equivalent of Strand 1, this year studies Romans 12-15), and build deep friendships
Meet Jesus Week	Jesus Week is one week where we intentionally prioritise evangelism and being bold on-campus with proclaiming Christ. Under the banner of the Meet Jesus branding, we repurposed Jesus Week into Meet Jesus Week. This event is important because it emboldened Christians to tell their friends about Jesus, man a stall that we had all week, and be more involved with the campus group (eg walkup, baking goodies for the stall, handing out flyers, wearing Meet Jesus shirts)
Servant-Hearted	SH is our annual leader's retreat at the beginning of the year, allowing us to focus our eyes on what we are prioritizing this year and seeking to achieve in God's strength. This was a great opportunity for us to explain what the Meet Jesus mission would look like on-campus.
MYC/AnCon Attendance	120

**About your Campus**

As we think about the AFES mission in terms of evangelise, encourage, train and send, write one or two sentences about the strengths, weaknesses and opportunities of each of these areas.



**Strengths, Weaknesses and Opportunities:**

<b>Evangelise</b>	<p>Strengths: raised evangelistic temperature as a result of the Meet Jesus mission. Substantially more people involved in walkup.</p> <p>Weaknesses: no discernible weaknesses, however there has been a dropoff in evangelistic efforts in the last month as we enter finals season.</p> <p>Opportunities: building on what is a great culture next year.</p>
<b>Encourage</b>	<p>Strengths: created a group chat called "Meet Jesus Prayer" in which we share encouraging stories from walkup or conversations with friends. This is a great source of encouragement for the vast number of people in the group</p> <p>Weaknesses: N/A</p> <p>Opportunities: To continue in God's strength!</p>
<b>Train</b>	<p>Strengths: With the Meet Jesus Mission, we have been more focused on evangelistic training, with both 1-1 training and brief training courses being run by students.</p> <p>Weaknesses: With less people being currently involved in the past month, the application of this training is lesser.</p> <p>Opportunities: large group of current first- and second- years who are committed to the student group. Turning them into Bible study leaders next year and being formally involved with the teams will give many opportunities for straining</p>

---

<b>Send</b>	Strengths: Good training for when people leave. Strong encouragement by both staff and other students to not just be involved with the student group, but with the local church as well. Weaknesses: N/A Opportunities: Next year (2025) will have a substantial number of graduates leaving who have been deeply involved with the group for the entirety of their time on-campus.
-------------	---

---

**What are the main ways your group evangelise on campus?**

1. Walkup
2. Conversations with friends
3. With Meet Jesus, using branding

**As a group, what are you finding tough?**

One of the staffworkers (Kim Gibson) is undergoing cancer treatment, and was considered to have months left to live. She has been deeply involved with the campus group for an extended period of time, and has had a profound impact on a wide number of students. Many students are grieving over this, and that is tough to navigate

**If known, what are some your plans for 2025?**

Continued use of the Meet Jesus Mission

**How does your group use AFES PrayerNet to pray for other groups?**

We don't use PrayerNet as much as other groups, only on occasion.

**How can we pray for you?**

Prayer that God will use our plans of continuing the Meet Jesus mission into next year

## Conferences / Events

List 3 strategically important reoccurring or one-off conferences / events you run for your campus group.

Event Name	Why this event is important to your campus group
Kick off camp	Kick off camp is our way of introducing new people to the group. We use it as an introduction to the year and help solidify first years as part of the group.
Mid year Camp	Mid year camp is our chance to encourage students to dive deeper into the Bible. Throughout the year we aim to have every student participating in an ABC bible study group. Mid year camp helps lock in and continue practising exegetical bible reading and biblical theology whilst covering a biblical doctrine. This year we focused on the doctrine of grace. Looking at how all aspects of salvation are by grace alone (faith, salvation, adoption, etc).
various social events	We have had a number of guys, girls and mixed social events. We aim to have some biblical teaching at each of these events however a large part of their purpose is to help the club members relate more deeply so that they can be encouraging and spurring each other on throughout the year.
MYC/AnCon Attendance	23

## About your Campus

As we think about the AFES mission in terms of evangelise, encourage, train and send, write one or two sentences about the strengths, weaknesses and opportunities of each of these areas.



### Strengths, Weaknesses and Opportunities:

<b>Evangelise</b>	We evangelise through our students and the friendships they form during uni. This can be a slow process and doesn't always produce much as we depend heavily on student to student interaction, however we have found that those we do reach are more eager to know Christ and grow in faith.
<b>Encourage</b>	We encourage students to grow by stretching them in our ABCs and bible talks. We try to keep in regular contact with the students and check up on them when we can. This comes with mixed reactions, some find this very helpful and have continued to grow because of it, others aren't as keen to keep growing and so retreat from club when they realise we are more than just a social group.
<b>Train</b>	We have had talks in Matthew, Exodus, Ecclesiastes and on Wisdom and Spiritual Warfare. We have also done studies on evangelism (Learn the Gospel and Share the Gospel by Tony Payne). We do a good job on focusing on Jesus and understanding how salvation affects all of life.
<b>Send</b>	I think we do a good job at calling the students to respond to the talks and studies, that is in faith, which leads to godly living and sharing the gospel. We have seen a number of students step up to the call, however we have also seen some retreat back as well.

### What are the main ways your group evangelise on campus?

Our primary means of evangelism is through the students relating to classmates. Developing relationships and sharing the gospel with their friends. This method has been quite good in the past, however much of our campus is moving online which makes developing those relationships more difficult.

**As a group, what are you finding tough?**

Mostly the ongoing move to online studies. It makes connecting with new students difficult as even if we make initial contact on campus they often drop off throughout the year, particular when deadlines get close. We have recently had changes within the campus on how campus clubs are run and who manages them. This hasn't been a major problem yet however there is potential for room bookings and the like to become much harder. We have also had to balance between students being in semester and trimesters which has been a challenge.

**If known, what are some your plans for 2025?**

For the most part continue as is. We will have a few apprentices leaving as well as a new staff worker coming on for focus. We will hopefully have more interaction between focus and local students.

**How does your group use AFES *PrayerNet* to pray for other groups?**

Each week we take a prayer point for bible talks as well.

**How can we pray for you?**

Please pray for the changes that are happening next year, for the new staff member and new committee. That will prepare and serve the club well. For the leadership team as a whole, that they would act in wisdom in responding to the changes to the uni structures and timetable. Also for the ongoing move to the trimester system, that we the students will be able to time manage well and priorities their faith. And for the those finishing up this year. That they would serve Christ well in their new stage of life.

**Conferences / Events**

List 3 strategically important reoccurring or one-off conferences / events you run for your campus group.

Event Name	Why this event is important to your campus group
Kick-Off Camp	Super important - allows us to connect with new students at the beginning of the year and get them integrated into the group.
Mid Year Camp	Allows us to cast vision for the future of our group and train the students who come along
NTE	Connection with other universities, training and growing in love and knowledge of Jesus.
MYC/AnCon Attendance	10

**About your Campus**

As we think about the AFES mission in terms of evangelise, encourage, train and send, write one or two sentences about the strengths, weaknesses and opportunities of each of these areas.



**Strengths, Weaknesses and Opportunities:**

- Evangelise** Students at SCCS have shown fruit through evangelising to their friends, by inviting them to events, reading the gospels with them, or inviting them to church. However, students' busy schedules can limit participation in outreach activities or the amount of depth in friendships. USC's diverse student body provides a valuable opportunity for the group to reach people from various backgrounds who may be curious about Christianity, through engaging events and respectful discussions.
- Encourage** Our regular Bible talks and Connect nights serve as a great source of encouragement for students, from the Bible. One area we want to grow in, is seeing older students take up an 'encourager' role for the younger students, rather than solely relying on the staff worker to do this.
- Train** We have seen great training moments in creating opportunities for students to give talks at our connect nights. The feedback from listeners was encouraging and it provided a great training moment for the speaker to work on the formation and delivery of their talk. One struggle is only having one dedicated staff worker on our campus, so it would be great to see more staff added in the future to create a wider breadth of training opportunities.
- Send** Over the last few years, we have sent a significant number of apprentices off to Bible college to be trained for full-time gospel ministry, compared to our size. This is a great strength of our group, but something we want to focus on as well, is preparing students well to be gospel workers in whatever workforce they graduate into.

**What are the main ways your group evangelise on campus?**

Easter egg/study snack hand out with evangelistic opportunities, Friendship evangelism, public talks, reading the gospels, Q+As

**As a group, what are you finding tough?**

Being limited by only one staff worker. It would be great if we could have a second one!

**If known, what are some your plans for 2025?**

Develop new committee team

**How does your group use AFES *PrayerNet* to pray for other groups?**

Prayer days, doing a hike and praying for other uni's.

**How can we pray for you?**

Pray for the provision of a new staff worker. Pray that the new committee would lead with gospel wisdom and grace. Pray that more people on the University of the Sunshine Coast and beyond would discover and deepen their relationship with Jesus, and would come to see him as the supreme source of satisfaction in this life, and the life to come.

**Conferences / Events**

List 3 strategically important reoccurring or one-off conferences / events you run for your campus group.

Event Name	Why this event is important to your campus group
Subbies	This event offers free food, fun activities, opportunities to build friendships and some evangelistic teaching to international students from South Asia.
Friday Night FOCUS	This event offers free food, fun activities, opportunities to build friendships and some evangelistic teaching to international students from East Asia.
Team and Helper's meeting	This event offers some teaching and training for our volunteers. It also serves to communicate with the volunteers about the things going on within the organisation.
MYC/AnCon Attendance	20

**About your Campus**

As we think about the AFES mission in terms of evangelise, encourage, train and send, write one or two sentences about the strengths, weaknesses and opportunities of each of these areas.



**Strengths, Weaknesses and Opportunities:**

<b>Evangelise</b>	<p>strengths - its usually easy to get 40 non Christians to come along and hear our Gospel</p> <p>weaknesses - hard to get students to take the next steps; small groups or one to one Bible study.</p> <p>opportunities - God continues to bring Non-Christians along and hopefully 2025 will see us return to something like pre-covid numbers.</p>
<b>Encourage</b>	<p>strengths - opportunity to evangelise and be around non-Christians and talk about deep and meaningful things every week.</p> <p>weaknesses - our volunteers are too busy.</p> <p>opportunities - we are connected to a good number of Christians who are keen to grow.</p>
<b>Train</b>	<p>strengths - most of this happens in our monthly team and helper's meeting</p> <p>weaknesses - our volunteers are too busy to attend Bible studies or more intense training sessions</p> <p>opportunities - we are connected to a good number of Christians who are keen to grow.</p>
<b>Send</b>	<p>strengths - we are always talking about God's desire to see his Gospel go to the ends of the earth.</p> <p>weaknesses - our people want to stay in Australia</p> <p>opportunities - our people have the language, culture and passport required to reach the lost in their home countries</p>

**What are the main ways your group evangelise on campus?**

Main meeting, 1:1, small groups

**As a group, what are you finding tough?**

Small numbers of students

**If known, what are some your plans for 2025?**

Keep doing what we're doing. Although we hope to be able to do them with a much larger pool to draw from.

**How does your group use AFES *PrayerNet* to pray for other groups?**

We encourage use of Prayermate

**How can we pray for you?**

Pray that God sends the hundreds of international students that UTAS has said we will get.

**Conferences / Events**

List 3 strategically important reoccurring or one-off conferences / events you run for your campus group.

Event Name	Why this event is important to your campus group
Trivia Night	Towards the end of Semester 1 we often run a Trivia Night. This is a great opportunity for Uni Fellowship members to invite their friends to an event and for people who may be unwilling to come to an explicit bible teaching event to get to know Christians and build repour with Uni Fellowship. This event is also entirely coordinated by students which is a great opportunity for them to gain some more experience in leadership. While there is no explicit Gospel message at this event it provides an opportunity for people who would not be comfortable coming to an event with a Gospel message to become more comfortable with Uni fellowship and the idea of coming to more events where there will be a Gospel message.
NTE	In our normal MYC spot we ran NTE. This was a great opportunity for both Launceston and Hobart to gather together with FOCUS and Subbies to explore the bible together and be mutually encouraged by each other. It was also an opportunity to invite more Christians as it was a bigger event.
Evening of Story and Song.	This event was a biggest event in semester 2. It provided a great touch point for those who had come to some events in semester 1 but had come to less things in semester 2. It also highlighted the God given skills of many of the Christians at UTAS.
MYC/AnCon Attendance	50

**About your Campus**

As we think about the AFES mission in terms of evangelise, encourage, train and send, write one or two sentences about the strengths, weaknesses and opportunities of each of these areas.



**Strengths, Weaknesses and Opportunities:**

<b>Evangelise</b>	UTAS has a pretty bad campus life. A combination of online learning and multiple campuses has made evangelise difficult over the last few years. However, God is still working and is capable of amazing things.
<b>Encourage</b>	In this time of change and rebuilding, Encouraging one another in ministry is key.
<b>Train</b>	We are in a position where we have multiple staff members who are well equipped to train students for ministry which is a real blessing.
<b>Send</b>	It's always encouraging to hear how Uni Fellowship members are involved in their local churches in a variety of roles. It is a joy to be apart of growing and equipping young leaders to be able to better serve their local churches and maybe even go beyond their local churches.

**What are the main ways your group evangelise on campus?**

Evangelism is difficult at UTAS because there aren't many people around very often. The main ways we do it are though individual friendships of Uni fellowship members and through our events and inviting non Christians to events.

**As a group, what are you finding tough?**

Getting people involved. We are finding that people are hesitant to commit to coming to Uni Fellowship events in recent years. Also, We have struggled over the last few years with maintaining a healthy student-staff partnership. Specifically with maintaining really good and effective communication.

**If known, what are some your plans for 2025?**

We are doing a series on Romans and we hopefully have two special events with guest speakers Michael Jenson and Rory Shiner.

**How does your group use AFES *PrayerNet* to pray for other groups?**

We usually Pray for different AFES groups in our fellowship groups which are small groups of students who pray and read the bible together.

**How can we pray for you?**

Pray that we will get people on the exec who are keen and passionate about evangelism. Pray that the exec and staff maintain healthy communication this year. Pray that God will save students at UTAS.

## Conferences / Events

List 3 strategically important reoccurring or one-off conferences / events you run for your campus group.

Event Name	Why this event is important to your campus group
Kickstart	We ran Kickstart as a one day conference at the beginning of the year, specifically intending to introduce first-years to what Uni Fellowship of Christians is about. We had about 15 people in attendance and it was a great time of making connections and building community within our group.
Monday Muster	Throughout semester 1 we ran our fortnightly 'Monday Muster' events which were a time of training, prayer and encouragement with one another. We covered topics such as 'what is the gospel?' and also looked at what it looks like to rejoice in the gospel and suffer for the gospel.
Healthy Relationships Seminar	We ran a Healthy Relationships Seminar event as a part of UTAS's 'Sexual Health and Guidance week' in an attempt to bring a Christian perspective to this topic. We held this as an outreach event, aligning with our Meet Jesus mission and intending to share the gospel where possible. We invited many non-Christian students to come along to hear a Christian perspective. This was our most well attended event for the year and it was encouraging to see so many of our own group get involved in the running of the event too.
MYC/AnCon Attendance	We were not able to hold our MYC this year due to NTE in the regions (held in Hobart) being in July. 4 of our students travelled to Hobart for NTE.

## About your Campus

As we think about the AFES mission in terms of evangelise, encourage, train and send, write one or two sentences about the strengths, weaknesses and opportunities of each of these areas.



## Strengths, Weaknesses and Opportunities:

<b>Evangelise</b>	The changing climate of the University has made it difficult for evangelism this year. More and more students are moving online which means there are significantly less students on campus to interact with. Much of our evangelism is through building close relationships with those we do know on campus, and it has been encouraging to see people being curious and asking questions about what we believe.
<b>Encourage</b>	Our group has had more of a focus on encouragement this year, through meeting regularly and building each other up in Christ. A big focus has been on building a strong group of people that can encourage and support one another as Christians at Uni.
<b>Train</b>	Much of our training has been at our Monday Muster gatherings this year, as well as at conferences such as NTE. We are blessed to have had support from our Staff Worker this year to help us with this aspect and he has run most of the training that we have done throughout the year.
<b>Send</b>	I feel this is the weakest area for our group and more thought needs to be put in to how we are sending students from our group out in to the all the earth.

## What are the main ways your group evangelise on campus?

Our main points of evangelism are through building personal relationships with those around us and sharing Jesus that way. We have also run 'Uber Questions' where students can submit a question about God or Christianity and we will deliver them a toasted sandwich along with an answer. Our Healthy Relationships Seminar was another larger outreach event that we held with the intention to share our faith on campus.

**As a group, what are you finding tough?**

Our biggest struggle this year has been connecting with students on campus. UTAS has moved most of their course work online, meaning that it has been very difficult to build relationships with students and form a 'presence' on campus. This has had implications for our group as a whole in terms of being able to hold and run events and even small groups, as well as for our evangelism.

**If known, what are some your plans for 2025?**

Most of our plans for next year are still very much in the works. Something we intended to do is work with the Hobart campus group to run our conferences together, making the most of the resources we have in Tasmania.

**How does your group use AFES *PrayerNet* to pray for other groups?**

We had been using the PrayerNet at our fortnightly Monday Muster gatherings in Semester 1, in our small group prayer times.

**How can we pray for you?**

Pray that the students we are connected will be encouraged to come along and be more involved in our group. Pray that our new student executive will be well supported as we think towards what next year will look like for us without a formal AFES Staff Worker.

**Conferences / Events**

List 3 strategically important reoccurring or one-off conferences / events you run for your campus group.

Event Name	Why this event is important to your campus group
Lunch 'n' Talk	This event is important to our campus group as it allows for moments of fellowship on a regular basis, as well as Biblical teaching from our staff and a chance to discuss and ask questions about the passage. It can also be used to give once off mission or topical talks which have been valuable, as well as be just a space for eating and fellowshiping, particularly to welcome new people.
Bible studies	Bible studies are a valuable time for members to meet in smaller groups to discuss Bible passages in more detail and get to know each other and pray for each other. Lots of questions have come up as well as people exploring faith feeling comfortable to voice their thoughts.
Easter mission	This is an important event that enabled us to share the gospel message to hundreds of students through doing the 2 ways to live challenge and giving them free hot cross buns and hot chocolate, followed by a short Easter talk and discussion. This was valuable in making our presence on campus known as well as helping others Meet Jesus.
MYC/AnCon Attendance	20

**About your Campus**

As we think about the AFES mission in terms of evangelise, encourage, train and send, write one or two sentences about the strengths, weaknesses and opportunities of each of these areas.



**Strengths, Weaknesses and Opportunities:**

<b>Evangelise</b>	Evangelism on our campus has done well through our events such as Easter mission and mission weeks. Students have been able to practice telling people the gospel story through 2 ways to live which has reached a lot of people. We have opportunities to be more intentional with evangelism in a one on one relational way.
<b>Encourage</b>	The group has been able to receive encouragement from God's word in many ways this year, as well as around making people feel safe and knowing they don't have to have figured everything out yet. We could promote more of a culture of checking in and encouraging one another within Bible studies or after talks.
<b>Train</b>	The staff do a wonderful job training student leaders in leading different events and getting to know and handle the Word better. We have been noticing the opportunity to be trained in people skills and being welcoming and inviting to all in any event.
<b>Send</b>	Students have been able to be sent onto campus with 2 ways to live this year, next year we are hoping to send more out to classmates and be intentional with who we are having conversations with.

**What are the main ways your group evangelise on campus?**

Having a stall out in the corridor with different prompts to discuss as well as chatting with those exploring faith who come along to our events. Occasional public talks or interfaith dialogues.

**As a group, what are you finding tough?**

Can be tricky for new students to connect in quickly, can take 6 months to a year because of getting used to uni life generally and our events are during the day. Tough as well once students feel connected, to then encourage them to be outward looking to evangelise.

**If known, what are some your plans for 2025?**

Some more casual connection events, emphasis on relational mission.

**How does your group use AFES *PrayerNet* to pray for other groups?**

We submit our prayer points to AFES, have been hearing updates from other groups from Presidents prayer meetings.

**How can we pray for you?**

Pray for next exec team as they step up; to work well together and lead the group in a way that glorifies God.

Pray for the end of semester with lots of exams and placements for people, that we would be sustained and be able to enjoy the ball and NTE amidst all of that.

Pray that the group will continue to grow in maturity in Christ and in relationships with one another, as well as be outward looking.

**Conferences / Events**

List 3 strategically important reoccurring or one-off conferences / events you run for your campus group.

Event Name	Why this event is important to your campus group
Food for Thought Dinners	This was the first time Deakin has run this type of event and in the particular format we did it in, and praise God it was a huge success. It was important to us as the Executive to facilitate discussions about the deep questions of life that young people tend not to think or talk about at all. It was so encouraging to have open discussions about the deep things of life and we pray it is thought-provoking for all those who came!
Summit	Students are always so encouraged and grown by our mid-year camp, particularly because of the richly-theological studies we do - such fabulous teaching.
Base Camp	So fantastic for people to connect in with the club and Christianity!
MYC/AnCon Attendance	Around 60ish

**About your Campus**

As we think about the AFES mission in terms of evangelise, encourage, train and send, write one or two sentences about the strengths, weaknesses and opportunities of each of these areas.



**Strengths, Weaknesses and Opportunities:**

<b>Evangelise</b>	We have been able to do weekly evangelism stalls to engage with students on campus! Sometimes hard to get into proper long conversations with them, but it is great for all passers-by to see the Christian Union club out and about and being friendly on campus!
<b>Encourage</b>	CU is encouraging both for new/investigating students and for returning students - to meet with fellow Christians, grow, learn & discuss together about our faith and to engage with investigating students too.
<b>Train</b>	We have been so grateful for the staff who are so fantastic at training all of us in the Bible and growing and maturing us in Christ.
<b>Send</b>	In strands and by praying/encouraging us, CU has always been great at lifting our eyes to the mission field and encouraging us to consider mission both locally and/or globally.

**What are the main ways your group evangelise on campus?**

A weekly evangelism stall - with hot chocs or bubble tea

**As a group, what are you finding tough?**

Sometimes hard to engage deeply with some of the international students and get them to come back.

**If known, what are some your plans for 2025?**

Very similar things probably, as they're working well!

**How does your group use AFES *PrayerNet* to pray for other groups?**

Still figuring out the best way.

**How can we pray for you?**

Continue praying for the mission and ministry at Deakin, it is so encouraging seeing new/young Christians being grown and challenged in their faith, and have a growing desire for Jesus!

**Conferences / Events**

List 3 strategically important reoccurring or one-off conferences / events you run for your campus group.

Event Name	Why this event is important to your campus group
Connect	<p>Connect serves to be our weekly catchup for free dinners and sermons for the regular members in GCU. As we tend to be a smaller group compared to other Christian Unions connect can be more relaxed which allows for great friendships and deep discussions between members and outgoing students alike.</p> <p>Having a regular event such as this allows us to cover over a big section of particular topics or a longer book of the bible (i.e book of John, book of Luke). This was especially useful when we participated in the meet Jesus John Uncover bible studies as we looked at John over connect.</p> <p>Since our Christian Union are mainly built on friendships and relationships between students, connect also serves to be a great hub for friends to catchup over. With it we intend that with the possibility of creating circles (or more known as cliques) we try to open up those circles with those new within GCU or Connect.</p>
MYC (Mid Year Conference)	<p>MYC really benefits our club as these conferences are camps held out within nice areas. Over the course of MYC students tend to ask more difficult questions, deeper discussions between other students and staff and creating friendships that last throughout their university courses as compared to connect and/or bible study.</p> <p>With the camp, members who enjoyed MYC tend to stay around within the club space alot longer than for those that haven't gone to the conference. I do believe that MYC does facilitate the friendships well after the camps, and while the connect and bible studies help with general knowledge surrounding the bible and knowing Jesus, MYC in a sense makes it real for those participating.</p> <p>The topics are not simple head knowledge but truths that people can really live in, and with the addition of fellow brothers and sisters along with worship newcomers can come to see and live by the Lord not just in mind, but in heart and in spirit. MYC gives us that oppotunity to live by the Lord in joy.</p>
Bible Study/Small Groups	<p>Bible studies prove to be foundational for skills surrounding reading the bible and discussion. While isn't the most impressive event as compared to connect and MYC, it is essential for new comers and members to get used to the many differing ideas surrounding the bible and how it relates to us as readers and towards Jesus Christ. Often times the bible studies grant guidance aswell for those within a bible study group since readers can get lost on what to read or what they're reading exactly.</p> <p>Unlike the other two events, bible study is the least intensive event for students to participate. A simple hourly bible study some will consider more than that of connect and MYC due to its slow and less intensive nature.</p> <p>I believe bible studies can still elicit growth when surrounding people's faith and knowledge of the bible. And through it possibilites of discipling and ways of applying the bible are possible.</p>
MYC/AnCon Attendance	50 Students (combined with Bendigo and Ballarat Christian Union)

**About your Campus**

As we think about the AFES mission in terms of evangelise, encourage, train and send, write one or two sentences about the strengths, weaknesses and opportunities of each of these areas.



## Strengths, Weaknesses and Opportunities:

<b>Evangelise</b>	We are really good at inviting our friends within university and (if the event permits) people from outside of university, our GCU helps accomadate that. However we are still working on being able to evangelise directly towards the campus as a whole and engaging the students there. We are developing new topics and/or activities that can help to gain relevance for the students at campus and evangelise through that method.
<b>Encourage</b>	<p>We've done well to encourage others to bring their friends into some events such as Food for Thought, Connect and the camps. We have also been good role models as older GCU members to show the possibility of serving at stalls, connect teams, outreach etc that we get new students motivated on serving.</p> <p>Our weakest point which is also an opportunity is to be more bold on our evangelism, walk up evangelism along with being able to talk through the tougher topics may be hard on others to do.</p>
<b>Train</b>	<p>Through training, we have created gear up day for people to learn how to run stalls. We also give people the chance to learn through any parts of serving be it bible study leading, connect and outreach team work, small groups between only students, discipling students not only through work but how we direct our serving towards the Lord as our way of living.</p> <p>Its not easy to cover all the bases however, we are still working on getting a good prayer program/activity for the students to come.</p>
<b>Send</b>	We have done really well on sending students, at the late part of last year we have sent some students along with staff to Slovenia for a small mission trip proving really successful for the students participating. However over the past years sending students to serve in mission for churches has been pretty difficult which is why we have aimed this years oppotunity to serve in a church for christmas mission.

### What are the main ways your group evangelise on campus?

The main ways that we've evangelised on campus is first exposure of GCU through stalls, which then lead onto our Connect, bible studies and later on camps.

### As a group, what are you finding tough?

There has been more restrictions on how to evangelise, especially as staff aren't able to do walk up for student. Likewise we are to be careful when evangelising considering those from the LGBTQ+ community and the topics surrounding sexuality and gender.

Next year will be quite different, as the staff members are getting reduced from 4 this year to 1 next year. There will need to be quite a few provisions as to how conduct the club with less staff resources.

### If known, what are some your plans for 2025?

We have not though of many plans.

### How does your group use AFES PrayerNet to pray for other groups?

We have used some meet jesus information and social media (I.e AFES prayer account on Instagram) to pray.

### How can we pray for you?

I pray that next year will come through with many oppotunities down the road. and while the staff members are getting lessened I pray that we are still bold to preach and evangalise even through our struggles. Not that we get frustrated but become steadfast with the Lord.



**Conferences / Events**

List 3 strategically important reoccurring or one-off conferences / events you run for your campus group.

Event Name	Why this event is important to your campus group
John Drama	Our biggest outreach event of the year, the John Drama, took place on April 29th and 30th. CU, along with churches across Ballarat, came together to present the Gospel of John in a theater-in-the-round. With just four days of practice, it was a miracle to see everything come together! Around 350 people attended between FedUni and ACU—truly a testament to God’s hand at work. The gospel is powerful, and we saw Christians being reminded of the sacrifice of Jesus, while others were introduced to the Gospel for the first time.
CONNECT Nights	We have had our regular Connect nights every Wednesday, 6 to 9pm. We have a Bible talk in the beginning, followed by dinner and then electives/training on various things. This year our Bible talk topics were- the aims of CU, 'What are you searching for?' series, 'Jesus the Greatest Of All Time' from the book of Hebrews. In the training sessions we did the 'So many questions' book, how to train for evangelism-motivation, equipping.
Table Talk	We hosted a Table talk at the restaurant Kazan, discussing the question “Are You Searching for Satisfaction?” around warm Afghani and Turkish food. Yakub, the restaurant owner, even shared his powerful testimony of finding true satisfaction in Jesus. We had really deep conversations with some of our non christian friends who came along, some of which came to our regular Connects to explore more about who Jesus is.
MYC/AnCon Attendance	10

**About your Campus**

As we think about the AFES mission in terms of evangelise, encourage, train and send, write one or two sentences about the strengths, weaknesses and opportunities of each of these areas.



**Strengths, Weaknesses and Opportunities:**

<b>Evangelise</b>	We have had quite a few non christian friends come to CU Connect nights, and some even regularly. God has been giving us a lot of opportunities throughout the year to share the gospel to these friends, through outreach events like the John drama and the table talk but also during the bible talks during Connect.
<b>Encourage</b>	God brings his children to himself. We have seen a friend come to Jesus during this year through the Uncover John book studies, which has been an immense joy and encouragement.
<b>Train</b>	We had training sessions on how to evangelise and share christ and also to answer difficult questions from the book 'SO many Questions'
<b>Send</b>	We pray as the students who graduate can go into the world taking the light of the gospel with them. For those who are still on campus to boldly share Jesus with others and for the NTE mission this year.

**What are the main ways your group evangelise on campus?**

Through our weekly Connect nights on wednesday and personal catchups.

**As a group, what are you finding tough?**

We wanted to do walkups and invite people to CU, but with the potential SCJ cult on campus, it hasn't made it any easy.

**If known, what are some your plans for 2025?**

Connect nights, having more socials outside of regular CU to foster friendship among the members. More to be discussed in the committee retreat,

**How does your group use AFES *PrayerNet* to pray for other groups?**

We do send prayer points every month through the prayernet.

**How can we pray for you?**

For the incoming committee to rely on God as they lead the group this year.

NTE mission

Pray that this year more of our Uni students would come to know Jesus.

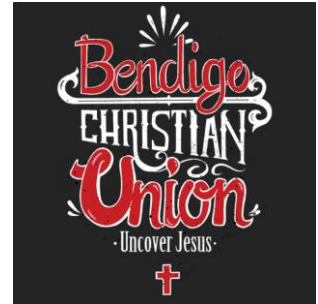
**Conferences / Events**

List 3 strategically important reoccurring or one-off conferences / events you run for your campus group.

Event Name	Why this event is important to your campus group
Kick Off camp	Our start of year camp at the end of Week 4. We hold this camp over a weekend to gather new students, especially first years, to get ti know them and build relationships. We also want to hear the gospel and get geared up for mission on campus together
The CU Bible talks	This is our main meeting each week of semester. We gather together to hear God's word in order to uncover Jesus together. The Bible talks are for Christians to grow and meet other Christians and also for Non christians to check out Jesus for themselves. We hear a talk, have discussion groups and prayer, and also have a meal together.
Training	During the year we have a seperate training hour where we are trained by the staff in how to share our faith on campus
MYC/AnCon Attendance	12

**About your Campus**

As we think about the AFES mission in terms of evangelise, encourage, train and send, write one or two sentences about the strengths, weaknesses and opportunities of each of these areas.



**Strengths, Weaknesses and Opportunities:**

<b>Evangelise</b>	our Bible talks are evangelistic, we also run mud week markets each fortnight where we get to set up a stall and talk with people about our club
<b>Encourage</b>	Our Bible talks, triplets and 1-1's are all really encouraging for us to grow in our faith.
<b>Train</b>	Training hour is really helpful in helping us know the gospel and being confident to have conversations with our friends. We find it hard to get people to come to training but the training itself is really good
<b>Send</b>	We have a graduating students day where the staff meet with grads and help them think about adjusting to life after uni

**What are the main ways your group evangelise on campus?**

probably through inviting people to our Bible talks, and also through the midweek markets

**As a group, what are you finding tough?**

Commitment from people to get involved in more than just Bible talks,

**If known, what are some your plans for 2025?**

not sure

**How does your group use AFES PrayerNet to pray for other groups?**

We use the prayer net notes in our Wednesday morning prayer meeting

**How can we pray for you?**

Pray for our NTE and mission coming up, and also our new committee

**Conferences / Events**

List 3 strategically important reoccurring or one-off conferences / events you run for your campus group.

Event Name	Why this event is important to your campus group
Donuts for Jesus	This outreach event helped to give people in our group the opportunity to try some walk up evangelism, and challenge themselves by being open about their faith in the centre of uni. It was also vital for making CU known, and for the uni community to see that we are a welcoming group.
Hot Cross Buns at Easter	Easter provides a unique opportunity to get people thinking about why they eat hot cross buns and what is actually remembered at Easter- what Jesus accomplished on the cross. We were in a unique position to be able to talk about this openly on campus.
Warburton Semester 1 Intro Camp	This camp helps our group to bond together as a family, taking some time away from the normal routines of life, to refocus for the semester ahead.
MYC/AnCon Attendance	47

**About your Campus**

As we think about the AFES mission in terms of evangelise, encourage, train and send, write one or two sentences about the strengths, weaknesses and opportunities of each of these areas.



**Strengths, Weaknesses and Opportunities:**

<b>Evangelise</b>	Weakness- We have daily opportunities to share our faith when we put our table out in our main hub on campus, but most students lack the boldness and courage to initiate or follow through in conversations.
<b>Encourage</b>	Strength- Our Monday night Fuel events are encouraging in that people bring their friends, and those that come can see that we are a welcoming and friendly group.
<b>Train</b>	Strength- We have produced mini Bible study cards that are designed to grow students in sharing their faith.
<b>Send</b>	Weakness- Students generally seem to be unable to clearly engage in ministry beyond the CU bubble, such as within their classes.

**What are the main ways your group evangelise on campus?**

1. Table- we are an active and constant presence out in the open, and sometimes we take worship outside too.
2. Focused outreach events- we have swing and salsa classes on Wednesday nights that get many non-CU attendees, who are then able to see that Christians are friendly and chill people, and can engage with the group in a non-intimidating environment. We also have some events like the Donuts and Hot Cross Buns, as well as worship on a Monday night, that people often bring friends to
3. Relational- group Bible studies, 1 on 1 catchups, our Monday night talks

**As a group, what are you finding tough?**

Raising up leaders who have strong Gospel convictions, and encouraging people to think practically about how the Gospel impacts their lives daily, and how they can be intentionally living out the Gospel.

Having all of the core consistent culture setters of the group present at every Monday night, or a large majority of them, has meant that new people are not getting followed up as we would like- are on the fringe a bit more sometimes.

**If known, what are some your plans for 2025?**

More focused outreach events like Donut week, pre semester 1 Warburton camp, Summit with ACU and Swinburne, Base Camp in April, and fun events in Orientation Weeks.

**How does your group use AFES *PrayerNet* to pray for other groups?**

We contribute to the PrayerNet each month, but have not been good at communicating about this to students in the group. This is something I think would be good to change next year.

**How can we pray for you?**

Prayer for our soon to be very new committee, that they can continue to work out individually and collectively what they want CU to look like, and for stronger communication between staff and committee. Prayer that we can keep encouraging new people to get connected in and think through how we can make this happen/ if anything needs to change, and that more people would get involved with our table outreach, so that it is mostly not just staff.



## Conferences / Events

List 3 strategically important reoccurring or one-off conferences / events you run for your campus group.

Event Name	Why this event is important to your campus group
Hub Time	Our weekly all-together time where most of the club meets in fellowship to hear from speakers, grow in the gospel, do some praise and worship and head out to dinner afterwards. This is where we see people grow in Christ.
Hot Choc Muffin stalls	Our fortnightly free food stall where we hand out free food to the people on campus whilst aiming to have conversations about faith, the gospel and Jesus Christ
Bible studies	Multiple bible studies have been run throughout the semesters going through a book in the New Testament, encouraging and growing nominal Christians and Christians
MYC/AnCon Attendance	7

## About your Campus

As we think about the AFES mission in terms of evangelise, encourage, train and send, write one or two sentences about the strengths, weaknesses and opportunities of each of these areas.



### Strengths, Weaknesses and Opportunities:

<b>Evangelise</b>	Our campus is not fertile ground for evangelism, with most people doing post graduates and disinterested in interacting with the campus, clubs and stalls. This has provided for interesting conversations at our hot choc muffin stalls.
<b>Encourage</b>	Our hub times and dinner afterwards were great opportunities for people to be encouraged in the faith by being together, where we often shared the highs and lows of our weeks. There needed to be more mature Christians in these spaces to help grow the less mature Christians.
<b>Train</b>	This year, we had a few new and nominal Christians interact with our club, and we had to go basics of the Christian faith grow them in the knowledge of Christ and what he has done. Some Christians also had a zeal for proclaiming Christ especially to international students, but lacking having a gospel mindset and gospel fluency, our staffworker and myself have come alongside those people. We required more help.
<b>Send</b>	Some older members of our clubs have recieved books as they graduate this year, whilst others not graduating have been encouraged to step up to help lead the club into next year. We plan on having a graudation send off at our hub time and NTE.

### What are the main ways your group evangelise on campus?

Our hot choc muffin stalls were great opportunities for people on campus to hear the gospel. This only happened fortnightly and on one particular day. For a greater reach, it should be done on multiple days.

### As a group, what are you finding tough?

This year, we have had more members join our club. Yet we operated with a small committee (myself and one other) with a part time staff worker which meant there was more cut out for all of us and lacking energy a various points. The club this year has not led non-Christians to Christ, so a strong engagement with non-Christians is needed.

**If known, what are some your plans for 2025?**

Evangelism corners and a outreach to the Chinese community are two aspects already considered

**How does your group use AFES *PrayerNet* to pray for other groups?**

We have not used it this year

**How can we pray for you?**

Please pray for a smooth transition for the incoming committee and that the gospel can be proclaimed to great lengths next year.

**Conferences / Events**

List 3 strategically important reoccurring or one-off conferences / events you run for your campus group.

Event Name	Why this event is important to your campus group
CU Hub	We gather weekly in our large all-in-campus event to rally together to then reach the campus. We read God's word, pray, sing, hear testimonies, share stories and share dinner together. This event is important as it provides a way for the club to be matured in their faith under God's word in a corporate setting. As well as providing a platform to hear stories and share encouragement so that we may be spurred on to reach out. This all-in-hub event also provides an opportunity for us to form deeper relationships with fellow brothers and sisters who we are on mission with on campus.
Summit Mid Year Camp	This year we looked at the topic of ascension on our annual mid-year camp with Deakin University. We had main sessions, strand groups, electives and many other activities going on. This event is important for our campus group as it is a catalyst for 2 primary things, growing in maturity in Christ and forming deeper relationships. Summit has historically been a camp where campus groups knit together friendship groups which is invaluable for their personal spiritual growth but also for the greater mission back on our campus. Furthermore, this camp also provides in-depth detailed study of the bible. We spent many hours with our heads down in God's word, unpacking the riches that lie within. There are countless stories of people's lives that have changed due to either understanding the Gospel clearly for the first time, or gaining a new depth and awe-inspiring understanding of Jesus.
Christian Union vs Philosophy Society Debate	This debate is an annual event that runs in semester 2 of our university calendar. This year we debated on the topic of suffering, and whether Christianity or secularism could better explain it. However, the debate is never really the main game when choosing to run this event. This event provides a great board off which conversations after the debate flourish. For the 3rd year in a row, the 450-seat lecture theatre was packed with students sitting in the aisles to listen to the debate. We had a book stall afterwards where we had Bibles and other books for people who were interested in investigating Christianity. We also ran a follow up event the next day inviting people along to discuss and unpack the debate more. Many thought-provoking conversations were had where people were pointed to look at Jesus!
MYC/AnCon Attendance	110 from Monash Clayton out of 194 total from all Deakin & Monash Campuses.

**About your Campus**

As we think about the AFES mission in terms of evangelise, encourage, train and send, write one or two sentences about the strengths, weaknesses and opportunities of each of these areas.



**Strengths, Weaknesses and Opportunities:**

**Evangelise** Our evangelistic walk-up ministry has grown this year to have more people regularly coming and doing weekly walk-up evangelism. As a ministry, we are growing in a positive direction on the evangelistic front, yet could improve on having more buy-in to our evangelistic courses we run.

<b>Encourage</b>	This is an area where we struggled this year in our ministry as we have grown to a size that means deep conversations are now harder to come by, with many relationships being surface level. We have implemented change for next year which in hope will funnel more students into Gospel community groups providing an avenue for deeper encouragement and biblical depth to flourish. A strength has been that we as a campus group during our CU Hub events have been sharing stories from different individuals about how they came to meet Jesus. Feedback has been that it has been very encouraging!
<b>Train</b>	We have run many different training courses this year which has led to much fruit, such as many students being equipped to read Uncover John with a friend. However, second semester has seen a drop off in student attendance and we want to work on better fostering a culture that deeply values this training.
<b>Send</b>	We had a very encouraging visit from CMS missionaries who are now back in the field. This was incredibly encouraging in having students consider missions as a future vocation. We have worked hard in bringing CMS stalls and contacts to many of our events and camps, allowing for thought-provoking workshops and challenging students about what it may look like for them to be sent as a cross-cultural missionary. We ran a course for final year students helping them prepare to leave Uni and go into the workforce. This was useful for those who attended, however more work needs to be done to better meet students in their final year and provide support to them as they leave.

#### **What are the main ways your group evangelise on campus?**

Through walk-up evangelism, big evangelistic events such as our Easter stall and debate, as well as reading Uncover individually with classmates.

#### **As a group, what are you finding tough?**

Deep connections and intimate community with brothers and sisters in Christ.

#### **If known, what are some your plans for 2025?**

We have planned to prune back the ministry per se, as we realised that too many events and things happening has hindered our ability to connect and be laser focussed on our main ministries. So we are starting Gospel communities which aim to be like bible study groups and like faculty groups, but all in one. This is one of the main things we hope to encourage students to join next year.

#### **How does your group use AFES PrayerNet to pray for other groups?**

We don't use this. We rotate through praying for missionaries and other IFES groups overseas at our large events.

#### **How can we pray for you?**

Pray that in 2025, our Gospel Communities may truly be Gospel-centred, bible focussed and allow depth in relationships to grow across the club.

**Conferences / Events**

List 3 strategically important reoccurring or one-off conferences / events you run for your campus group.

Event Name	Why this event is important to your campus group
Monash Parkville Orientation Clubs Carnival	This year we were blessed with many new signups from first year students during their orientation day. MPCU ran a stall with some bible related activities, such as guessing if a quote was from the bible or AI generated. Many new members joined and even more conversations could be had with the broader community about faith and purpose. This event was very effective at establishing MPCU's presence on campus.
Weekly Bible Studies	Each week 2-3 Bible study sessions were held where members could come along and go through Uncover John. This provided a weekly opportunity for members to study together and enjoy community, as well as equipping them with skills to hopefully then go and study Uncover John with non-Christian friends on campus. Occasionally new students would attend, giving them the chance to learn more about Jesus and the Bible.
Meet Jesus at Monash Parkville	MPCU held two Meet Jesus events that all members were encouraged to come along to and bring a friend. The events consisted of a short talk aimed at both Christians and non-Christians, focusing on the character of Jesus and how he is worthy of our worship. Afterwards, a light meal was provided where there was plenty of opportunity to hold discussions about the talks.
MYC/AnCon Attendance	8

**About your Campus**

As we think about the AFES mission in terms of evangelise, encourage, train and send, write one or two sentences about the strengths, weaknesses and opportunities of each of these areas.



**Strengths, Weaknesses and Opportunities:**

<b>Evangelise</b>	It can be difficult to evangelise to the larger community due to the nature and size of our campus. Instead, there are opportunities to evangelise to friends and those with preexisting relationships.
<b>Encourage</b>	Being a relatively small CU, relationships between all members can grow stronger, fostering an environment that supports and uplifts each other.
<b>Train</b>	This year we have focused more on training members during our weekly small groups, preparing them to go out into the community.
<b>Send</b>	This is an area that could be improved on our campus, encouraging those to go out into the wider community.

**What are the main ways your group evangelise on campus?**

Evangelism is not done as a group aside from a few select events throughout the year, due to the lower levels of student life and activity on campus, compared to other campuses. Instead, the focus is on preparing individuals to evangelise to friends through bringing up Christ in conversations and fostering any questions or interests they may present.

**As a group, what are you finding tough?**

Having less members can sometimes present a challenge, and it can be difficult to reach other students on campus and therefore grow as a group.

**If known, what are some your plans for 2025?**

No plans have yet been made for 2025

**How does your group use AFES *PrayerNet* to pray for other groups?**

PrayerNet is not actively used

**How can we pray for you?**

Pray for continued growth for the next year as we hope to continue with the momentum gained this year. Thank God for the many students willing to be involved in CU, and pray they continue to have this passion throughout the next year. Also pray for those on campus that have not yet met Jesus, and that God will provide opportunities where they can be reached in his perfect time.

## Conferences / Events

List 3 strategically important reoccurring or one-off conferences / events you run for your campus group.

Event Name	Why this event is important to your campus group
Kickoff Camp	it is our first camp and the primary way that new members can dive deeper and get integrated into the Christian Union community on campus. A great opportunity for new Christians to have their faith challenged and deepened
Summit Camp	The biggest camp we run, it goes for a whole week and cements friendships while teaching thorough exegesis. It's the pinnacle of the year and has a profound effect on the faith of students.
NTE Missions	This event fosters a godly fellowship among the students as they serve together on Christ's mission to evangelise and disciple. They get opportunities to serve in new ways with the assistance and guidance of mature Christians that help them to learn patterns of serving that will honour God's kingdom for the rest of their earthly lives.
MYC/AnCon Attendance	40

## About your Campus

As we think about the AFES mission in terms of evangelise, encourage, train and send, write one or two sentences about the strengths, weaknesses and opportunities of each of these areas.



## Strengths, Weaknesses and Opportunities:

<b>Evangelise</b>	Our orientation events and our bible studies have been able to reach many unbelievers and cultural/family "Christians", though most on campus are, however, still unreached. Many have never even heard of Christ Jesus. There is much more that could be done.
<b>Encourage</b>	Weekly bible talks and social events have done much to encourage the students in faith and community. However, due to the overwhelming numbers of new students this year compared to our student leaders, we have struggled to maintain a strong cohort of elder students to support, encourage, and role-model the faith to our first years.
<b>Train</b>	We continue to hold regular bible studies, camps, and training groups, equipping students to read God's word, teach, and pastor others in the faith. Our training has been strained by the lack of apprentices and bible teachers, but we praise God for the new apprentices who are coming next year
<b>Send</b>	This year, we have seen many students eager to go out and preach the faith in public spaces, and our upcoming mission will give them a chance to learn new ways of serving in a church setting.

## What are the main ways your group evangelise on campus?

Our start-of-semester outreach events have reached Christians and non-Christians alike on campus, and they have responded to the gospel that is preached at our weekly events and our bible studies also, which are the largest they have ever been. We aim to evangelise through Christ fellowship on campus, following the example of Christ, who has said "by this everyone will know that you are my disciples, if you love one another." (Jn 13:35)

**As a group, what are you finding tough?**

Our Bundoora ministry has been struggling because of the lack of a campus culture there, and we've had to stop doing some Bundoora ministries as a result. Most on every campus are, however, still unreached. Many have never even heard of Christ Jesus and penetrating through the secular and anti-Christian university sphere is difficult.

**If known, what are some your plans for 2025?**

we want to run more O-week events and are expecting to have another large cohort of new students to encourage and strengthen in the faith

**How does your group use AFES *PrayerNet* to pray for other groups?**

we are currently using it monthly in response to requests for prayer points

**How can we pray for you?**

Pray for us that God may give us renewed energy to work for His glory and kingdom at RMIT next year, that we might see new student leaders step up to faithfully and lovingly serve, and for the spread of the gospel on campus, that many more may hear the truth and repent of their sin

**Conferences / Events**

List 3 strategically important reoccurring or one-off conferences / events you run for your campus group.

Event Name	Why this event is important to your campus group
Base Camp	Crucial for developing relationships and building culture
Easter Mission	Crucial for reaching out to the wider campus
Summit	Great for connecting with other campus groups
MYC/AnCon Attendance	16

**About your Campus**

As we think about the AFES mission in terms of evangelise, encourage, train and send, write one or two sentences about the strengths, weaknesses and opportunities of each of these areas.



**Strengths, Weaknesses and Opportunities:**

<b>Evangelise</b>	Challenge is that staff are not allowed to do walk up Opportunity is that students absolutely can!
<b>Encourage</b>	Christian students are encouraged in their faith each week We can continue to grow in encouraging students on the fringes
<b>Train</b>	Each week intentional training happens in bible study groups, teaching spaces etc.
<b>Send</b>	Pray for the nations happens regularly Having an apprentice this year has given students a model of what vocational ministry looks like

**What are the main ways your group evangelise on campus?**

Being visible and available week-to-week  
Easter mission

**As a group, what are you finding tough?**

Having the bravery to form new friendships

**If known, what are some your plans for 2025?**

Easter mission, more options with another staff member joining our team

**How does your group use AFES PrayerNet to pray for other groups?**

Not at this time

**How can we pray for you?**

Please pray for a growth in numbers for our staff team

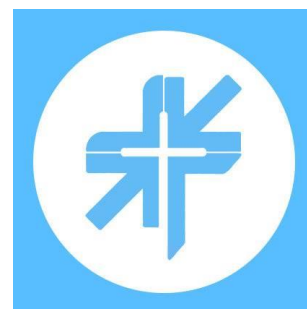
**Conferences / Events**

List 3 strategically important reoccurring or one-off conferences / events you run for your campus group.

Event Name	Why this event is important to your campus group
Monday Nights	This is the weekly Public Bible Talk and Dinner event for Melbourne University Christian Union. It is the main weekly gathering where CUers from all the different faculties come together to hear about the life of CU, pray together and hear a talk from God's Word, as well as join in fellowship over dinner. The event serves a dual purpose of reaching out to non-Christians by providing talks that are tailored towards those investigating Jesus, as well as helping Christians be built up in their faith according to the Bible and meet other Christians at a similar life stage.
Small Groups	These are the weekly small group gatherings, where a group of 6-12 students do a Bible study together, train each other up in evangelism and then pray for each other, particularly regarding non-Christian friends and family coming to meet and accept Jesus as their Lord and saviour. Small Groups are important for helping build up Christians in their Bible reading and evangelism skills in a smaller environment (unlike Monday Nights which are a bigger-scale event). Thus, it is helpful for establishing strong and meaningful friendships centred on a shared love for Jesus. They are also helpful for framing the campus as a mission ground where evangelism can take place, and of course prayer is very powerful as God is the one who ultimately grows the seeds planted :)
Summit	The annual mid year conference which was held at Belgrave Heights Convention Centre this year. It is important because it is the main conference for Melbourne University Christian Union of the year, where students from all different backgrounds can hear Bible talks, engage in Bible studies, go to electives to learn how to practically apply Christianity into our daily lives, and overall be immersed in fellowship and bonding. This year's Summit was on the topic 'The Spirit and the Word' which was important for helping people of all different originating viewpoints (non Christians, Christians of different denominations etc) establish the fundamentals from the Bible on the role of the Holy Spirit and God's Word. Summit is also an important event for helping those on the fringes of CU get really well connected with the community. And late night games are always fun
MYC/AnCon Attendance	95

**About your Campus**

As we think about the AFES mission in terms of evangelise, encourage, train and send, write one or two sentences about the strengths, weaknesses and opportunities of each of these areas.



## Strengths, Weaknesses and Opportunities:

---

**Evangelise** Strengths: Melbourne Uni CU has exponentially increased the intentionality of evangelism around campus, formally through Small Groups being tailored to help train and pray for evangelism opportunities, as well as informally through increasing the normal-ness of talking about evangelism! Also stalls during start of semester and Jesus Week (Easter week) to provide chances for evangelism at stalls.

Weaknesses: Melbourne Uni CU has not engaged in Surveying (walk up evangelism) as much in recent times, due to the increasing rise of cults which have made students very dismissive of any walk-up style of evangelism

Opportunities: Continuing to keep the ball rolling with Small Groups so that students don't just think about evangelism, but actually actively do it. Continue to read Uncover John with non-Christian friends. Melbourne Uni students may not be on campus a lot of the time, but the increasing dissatisfaction with the whole Uni program suggests opportunities for CU students to share about why the gospel provides ultimate satisfaction.

---

**Encourage** Strengths: This has always been one of the stronger elements of Melbourne Uni CU. The genuine and deep friendships that have formed here are due to the shared love for Jesus. And this is helped through events like Monday Nights, Small Groups, as well as more social events like faculty socials and Friday Futsal. Having lots of uni-aged Christians on campus brings lots of fun and encouragement!

Weaknesses: Some of the smaller faculties like Southbank and Arts have struggled to be places where Christians are encouraged and built up, mainly because there are not enough students in CU from these faculties so they may feel a bit isolated in faculty-specific events.

Opportunities: Perhaps having more events where faculties collaborate (which is already happening) to ensure a student's CU experience is not just based on how many people do the same course as them, but the wider CU community.

---

**Train** Strengths: Small Groups have enabled evangelism training to be more intentional and widespread at CU this year. Training and conferences have been very enriching places of training up students in reading the Bible and applying it to their lives.

Weaknesses: Monday Nights have become more tailored for a non-Christian audience so aren't as tailored for training Christians. There has also been less topical training events like more systematic theology or ethics-based topics, which was done in past but not this year to help with lessening student 'workload'.

Opportunities: Perhaps bringing back some more thematic, topical training sessions on what the Bible says on topics outside of evangelism, such as apologetics.

---

**Send** Strengths: Graduation dinner becoming a more formal event to send out graduating students. Ministry traineeship cohort has been introduced to help form a network of students who are all interested in vocational ministry. Weekly global prayer meetings to pray for Mission Partners.

Weaknesses: Harder to help CUers who are not very heavily involved to be sent out, as it's not the first aim of most of the weekly events like Monday Nights or Small Groups. Also most undergrad degrees are followed by a grad degree except Commerce, so hard to cater for all faculty audiences.

Opportunities: Increasing intentionality in partnering with Graduate Christian Union to help transition students from undergrad to grad, and then from grad to workplace.

---

### **What are the main ways your group evangelise on campus?**

Small groups are the main way that we help train students in evangelism and pray for evangelism opportunities/following up opportunities with friends. So from that, the main way of evangelising is through CUers reading the Bible with a non-Christian friend/having conversations about the gospel.

Other more formal ways of evangelism are the stalls we run during O Week, Week 2 of Sem 1, and J Week (Easter Week). Typically, these involve having a stall where there is free food, and inviting students to participate in an activity that has a light involvement with Jesus (like are these quotes from Jesus or AI?) as well as having deeper conversations with those who are interested.

Surveying is also part of MUCU, where we do walk-up evang and ask students questions about life, religion etc.

### **As a group, what are you finding tough?**

Getting surveying back as a regular thing. Not many CUers do it, and it can be hard as Melb Uni students are dismissive due to the campus having suffered from cults appearing to do a similar thing to us (but cults are much more wanting private information and to 'pull' people in)

Also retaining older students to be active in CU to help be a mentoring presence for younger students, as it seems older students get too busy/end up wanting to focus on other ministries like church. Or older students feeling like they've gotten what they want out of CU already/

### **If known, what are some your plans for 2025?**

Most of the events will be run the same (the stalls during O Week and J Week, Base Camp and Summit). Mission Week will run during Week 2 of Sem 2 as well.

### **How does your group use AFES *PrayerNet* to pray for other groups?**

The Prayer Secretary (woohoo go Lorien!) usually submits prayer points to AFES PrayerNet every month. Our Global Prayer meetings also use the prayer points from this website.

### **How can we pray for you?**

**Reach Out:** Pray for CUers to continue to be intentional and prayerful about evangelism opportunities, both through more formal means like walk-up and stalls, as well as more informal means like conversations and reading the Bible with non-Christian friends. Pray specifically that every CUer would read the gospel of John with a non-Christian friend!

**Build Up:** Pray that CU would continue to be a place where uni students can grow exponentially in their love for Jesus and how they apply their faith into their lives. Pray specifically that the Arts and Southbank faculties will grow in size, not for numbers sake but so that it would be a place where students from those faculties can help encourage each other despite being smaller.

**Send Out:** Pray for the graduating students of CU in 2024. Pray that they would bear good witness to Christ whether they go into further studies or the workplace. Pray specifically that all graduating students would consider what ministry looks like for the rest of their life, whether it be vocational or ministry in the workplace, as well as being generous with their time and finances for the sake of the gospel (since God so generously gave us so much first!)





**Conferences / Events**

List 3 strategically important reoccurring or one-off conferences / events you run for your campus group.

Event Name	Why this event is important to your campus group
Small groups	Our small groups operate as evangelistic prayer teams, where we spend about 20 minutes reading and discussing the Bible and 20 minutes praying for evangelism on campus and around the world. Over the last two years, these groups have increased the amount people are praying for gospel missions, especially for their friends.
Good Questions	Good Questions is an evangelistic apologetics course, which is good for raising questions with non-Christians, training Christian students to answer tough questions, and is a ministry opportunity for the Christian students running the course.
Bible talks	Bible talks offer a clear opportunity for both evangelism and encouragement for Christians as we open up the bible together.
MYC/AnCon Attendance	53

**About your Campus**

As we think about the AFES mission in terms of evangelise, encourage, train and send, write one or two sentences about the strengths, weaknesses and opportunities of each of these areas.



**Strengths, Weaknesses and Opportunities:**

<b>Evangelise</b>	In God's kindness, we saw four local and one international student come to trust Jesus this year. Participating in the national Meet Jesus mission was good but was probably not the cause of the growth in people coming to know and trust Jesus. A weakness is that there are still thousands of students on our campus who need to know Jesus.
<b>Encourage</b>	Students report feeling really strong relationships and friendships and while the teaching was good, some students reported wanting to spend more time in the bible this year. This is a challenge because of the limited amount of time we have when running events on campus during the semester.
<b>Train</b>	This year, we ran a strategy/training day, which was an opportunity for students in our club to come along, focus on our mission, and think about how we can best achieve our goals as a club. This training day will strengthen our club this coming year because we have fresh ideas to implement. The challenge that we face in training is gathering a larger proportion of our core members to any one training event.
<b>Send</b>	We gathered our graduating students and prayed for them to send them out. We also had a brunch where we discussed some topics about the future (future ministry, generosity, work etc.). A weakness in this area is that we could be more deliberate in the longer term (throughout students' entire final year) for setting up grads, considering the fact that some are on prac during their final year.

**What are the main ways your group evangelise on campus?**

Building personal relationships with friends and finding the easiest avenue for evangelism (e.g. Bible talk, Good questions, Uncover and praying for friends).

**As a group, what are you finding tough?**

Building connections with non-Christians on campus.

**If known, what are some your plans for 2025?**

Next year will be fairly similar, content wise, but we want to be much better at marketing our training events. We are also bringing on two new apprentices, who are recent graduates.

**How does your group use AFES *PrayerNet* to pray for other groups?**

We encourage small group leaders to use the prayer points in their small groups.

**How can we pray for you?**

- \* Prayer that we will see more people come to know and trust Jesus and that we will be led to evangelize lovingly and effectively while also trusting in God to work in people's hearts.
- \* Prayer for students to feel more connected to one another within our club while creating a community that is inclusive to new students.

**Conferences / Events**

List 3 strategically important reoccurring or one-off conferences / events you run for your campus group.

Event Name	Why this event is important to your campus group
Public Meeting	We hold our Public Meetings twice a week, and are one of the crucial functions of our club. These are 1 hour meetings usually in the middle of the day, where we encourage all members of The Gospel Stand to attend, and invite their friends on Campus to read the Bible together and find out about Jesus. Usually, this meeting will involve some social chats and fellowship, proceeded with reading of a Bible passage from part of a series we might be covering. A small talk and group discussion is followed with an opportunity for people to ask questions and really dig into the passage. After this, we will song a song or two, then pray together as a group, about the passage, and each other. Students are encouraged to hang around for more fellowship, or to head to lunch together afterwards.
Open Day Stall	Our Stall for the Open Day is one of our events we run once a semester, where we set up a stall and showcase our club to the entire university. This is important as it allows us to get the message of the Gospel out to those on campus, and interact with the students who are passing by. Usually, there are many people checking out ECU as it's a large week with many people coming to see the campus for themselves, so we make sure we are always ready to speak to those who may be interested in what we do, or even those who haven't heard of Jesus before.
Board Games and Dinner Night	This event is a social night where our Gospel Stand community can come together and enjoy a night of fellowship and fun together. Usually people bring a board game or two, and we spend the night enjoying each others company, being encouraged by one another, and praying for each other and for the campus. Having nights like these are important to our community as it creates a fun space to grow together and continue to build relationships with those around us. We try to have at least one or two per semester, on top of other social events.
MYC/AnCon Attendance	8

**About your Campus**

As we think about the AFES mission in terms of evangelise, encourage, train and send, write one or two sentences about the strengths, weaknesses and opportunities of each of these areas.



**Strengths, Weaknesses and Opportunities:**

- Evangelise** We promote Evangelism by promoting and living out your faith on Campus, and telling those around us in our classes about Jesus. We could improve on this area by directly hosting The Gospel Stand events or flyers on campus, focusing on hearing the Gospel.
- Encourage** We encourage one another during our Weekly Public Meetings and share stories of how we are doing on campus. Some students choose to share their stories on our social group chats, which keep us up to date and can pray for them.
- Train** Our main areas of training would happen either during Public Meetings, or in 1 to 1s on campus, as we read the Bible and learn to apply it's teachings to our lives. We could improve on this area by being more intentional with specific training on Evangelism, or leading a Bible study for example.

---

**Send** We could improve on our Sending by having more intention with how we Evangelise. We already do it as part of how we live for Christ in our day to day lives at ECU, but could certainly aim to make Him known more and promote The Gospel Stand

---

**What are the main ways your group evangelise on campus?**

We focus on evangelism by promoting Jesus in our conversations on campus. We hope to introduce people to Jesus in our conversations with them, tell them we are Christians and how he has transformed our lives, and invite them to find out more by reading the Bible, or coming along to a public meeting.

**As a group, what are you finding tough?**

We are finding it tough to find consistent members who are committed to our mission and cause on campus. Many people are either on the edge, visit once or twice, and not get fully plugged in. This leads to people knowing about us and existing Christians hearing about our group, but deciding its not for them or not getting involved.

**If known, what are some your plans for 2025?**

At this stage, no specific plans have been outlined for any big changes in 2025.

**How does your group use AFES PrayerNet to pray for other groups?**

PrayerNet is used primarily by individuals on Campus to register and pray for and with in their own time. Occasionally a topic will be brought up at our public meetings

**How can we pray for you?**

Our Campus could really benefit from a Full-Time female staff worker. At this time, we have one Male Staff worker, Ewen Lin, who is great and is very encouraging to all students. However, the women at The Gospel Stand would greatly benefit from an older woman who could disciple them and read the Bible with them 1 to 1, as to relieve some of the senior responsibilities from our 2nd and 3rd year ladies. Prayer for continued outreach and for the Gospel to be heard at ECU, so that many may hear of the good news that Jesus brings

**Conferences / Events**

List 3 strategically important reoccurring or one-off conferences / events you run for your campus group.

Event Name	Why this event is important to your campus group
Stall	Evangelistic event to reach out to non-Christians
Psalm	Live music performance showcasing Christian song writing from CU members.
Q&A	Allowed interested students to ask any questions about Christianity.
MYC/AnCon Attendance	10

**About your Campus**

As we think about the AFES mission in terms of evangelise, encourage, train and send, write one or two sentences about the strengths, weaknesses and opportunities of each of these areas.



**Strengths, Weaknesses and Opportunities:**

<b>Evangelise</b>	Our bible studies were good places to invite curious students to learn more about faith. But, walk up evangelism isn't allowed on our campus.
<b>Encourage</b>	There's a good core of students who know one another well, which is encouraging. The downside is the low attendance.
<b>Train</b>	There's a high ratio of staff to students, so all interested students get 1 to 1s. No real downsides here; training is done well at ECU CU Mt Lawley.
<b>Send</b>	Missionaries are supported, and outgoing students are encouraged to consider future ministry work.

**What are the main ways your group evangelise on campus?**

Stall and bible studies

**As a group, what are you finding tough?**

Low numbers

**If known, what are some your plans for 2025?**

I personally don't know, no longer involved.

**How does your group use AFES PrayerNet to pray for other groups?**

We have sometimes prayed for other campuses during our committee meetings.

**How can we pray for you?**

For the raising up of more student leaders in 2025, and for the wise use of staff time and resources.

Praise God for financial support from the guild.

## Conferences / Events

List 3 strategically important reoccurring or one-off conferences / events you run for your campus group.

Event Name	Why this event is important to your campus group
O-Week & Campus Kick-off	At the start of the year, as the first year arrives at uni for the first time, MCU finds engaging with these first years extremely valuable. Some may be coming from the Kickstart amp run for 1st Years starting university; others may have just seen our stall for the first time. No matter the reason, we aim to make the best impression and to bring new Christians into the CU group, while sharing the Gospel with those who have questions.
Mid-Year Conference	Mid-Year Conference (or MYC) is a joint conference run by AFES WA where the different CU groups come together to sit under God's word and be encouraged while encouraging one another through small groups, talks and fellowship. This year, 2024, MYC was on Navigating Life Under God. It was a wonderful experience to think about how we can go to God for guidance in all things, as he is sovereign and in control. We had many students come back from the conference feeling extremely refreshed and more connected with the other members of our CU group.
Meet Jesus Mission & Meet Jesus. Meet Abundance - WA Event	During the first 5 weeks of our second Semester, MCU ran the MEET JESUS mission ( in partnership with other campuses across Australia). Seeing students interact with non-Christian friends, family and uni students was so exciting as they aimed to share Jesus. We used the book of Mark to invite people to Meet Jesus through Bible talks and 1-1 Bible reading. For the WA Meet Jesus event, Meet Jesus. Meet Abundance, many MCU students invited friends, and roughly 5-10 Non-Christians were hearing the gospel for the first time. The follow-up after Meet Jesus was so wonderful, and we would be keen to participate in projects like this in the future.
MYC/AnCon Attendance	25 students

## About your Campus

As we think about the AFES mission in terms of evangelise, encourage, train and send, write one or two sentences about the strengths, weaknesses and opportunities of each of these areas.



## Strengths, Weaknesses and Opportunities:

<b>Evangelise</b>	Our strength at MCU is encouraging students to participate in the Stall activities that we hold weekly on a Thursday, with a team of around 16 students. Although we have seen 1 student come to Christ this year, and others have and are currently reading the Bible in 1-1's I think Walk-Up and the Evangelism culture needs strengthening at Murdoch.
<b>Encourage</b>	Through our weekly Bible studies, Equip courses, 1-1's and Bible talks, our students are constantly encouraged to live lives worthy of the Lord. I think we need to improve on bringing first years into the group for next year; that is a problem we have observed over the year.
<b>Train</b>	Through the MYC, Bible Talks and Equip courses, '2 Ways to Live', 'How to church?', and 'Love, Marriage and Singleness', students have gained knowledge and resources to share with others. Throughout the year our Equip courses had low attendance, and finding the solution to that problem is something we want to do for next year.

---

**Send** With the Mid Year Conference, Meet Jesus Mission, and later our MCU Mission Dinner, we encouraged students to think about Mission and ministry and how they can serve God no matter where they are in life. While the stall was a great way to show students how they can engage with ministry right now, we want to create an environment that starts conversations about being 'sent' by the gospel.

---

### **What are the main ways your group evangelise on campus?**

Through the weekly Thursday market Stall, doing different activities (this runs from 9 to 3:30).

Evangelistic Talks (Easter Bible Talk & Christianity explained)

Walk-Up (although this is something that is always on the Agenda, we want to create an environment where students feel they can use this as a way of engaging with non-Christian students).

### **As a group, what are you finding tough?**

I think we have found it especially tough not to be individual groups within our CU. We want to create a culture where it isn't 'First Years' and then everyone else.

### **If known, what are some your plans for 2025?**

Simple things like weekly Lunch meetings, prayer meetings and developing our communication to follow up with new students.

### **How does your group use AFES PrayerNet to pray for other groups?**

We use it every day as a key part of our daily prayer points (organised by one of our sub-committees). We also use it during our three weekly 'Prayer & share' prayer meetings.

### **How can we pray for you?**

Pray that with God's help, we will create a campus environment that will allow all students to see the beauty of the Gospel and how they can be a part of its spread at Murdoch University. Pray for next year's committee and the changes to come so we can collaborate and work well as a team. Pray that as we have a second year with a temporary Campus Team Leader, students won't feel disconnected due to the lack of consistency and see God as the one who is the same, yesterday, today and forever.

**Conferences / Events**

List 3 strategically important reoccurring or one-off conferences / events you run for your campus group.

Event Name	Why this event is important to your campus group
Easter Stall	It is an easy way to get our stall approved, Easter well known by all students on campus so we get a lot of people come up to our stall to have a chat and get a free hot cross bun. We also got to invite people to our bible talks the week after.
ODay Stall (semester one)	This stall is probably our biggest one where we meet the most people. We also do some walk up advertising and conversations with the many people around campus that day.
Meet Jesus Stall	Advertising an event targeted at non-Christians was a great way to start conversations about Jesus. Many people were interested about how to "Meet Jesus" and finding out more about the historical legitimacy of the Bible.
MYC/AnCon Attendance	6

**About your Campus**

As we think about the AFES mission in terms of evangelise, encourage, train and send, write one or two sentences about the strengths, weaknesses and opportunities of each of these areas.



**Strengths, Weaknesses and Opportunities:**

<b>Evangelise</b>	We are in the middle of bustling Fremantle - ripe for harvest!  With less people on campus, it means we get to notice individuals and talk to them, however, actually getting people to do that is limited. We have a big focus on evangelism through personal relationships.
<b>Encourage</b>	Similar to above, with less people, when they attend, we get to know each other well and hang out in small groups. However, the way Notre Dame operates means we hardly get to see people regularly (because of prac for example), which makes encouraging them frequently quite difficult.
<b>Train</b>	We have been able to do a bunch of evangelism discussion groups over the past couple of years which has been awesome! Often it is hard to find volunteers (who aren't committee or staffworkers) to lead things though - like leading a bible study or doing walk up.
<b>Send</b>	AFES in general provides great opportunities and encouragement to pursue ministry later in life, or simply live as a Christian in working life. The Notre Dame Bible Fellowship is a good vehicle for access to AFES resources and encouragement. And, doing the things previously mentioned helps to send out disciples.

**What are the main ways your group evangelise on campus?**

- Encouraging personal evangelism
- Conversations at stalls

**As a group, what are you finding tough?**

- The size. We do not have many people attending, or enthusiastic to get involved in campus ministry. The committee is fairly overloaded. We would really love an MTSer to help!!!
- The structure of Notre Dame. With people constantly on prac or not coming on campus, it is hard to find a time for people to meet (which adds to the problem of size).
- The Catholic background. Sometimes this limits what we can do.

**If known, what are some your plans for 2025?**

ODay stalls, Easter stalls, dinners together, Bible studies.

**How does your group use AFES *PrayerNet* to pray for other groups?**

We haven't used it.

**How can we pray for you?**

We would love prayer for our committee and finding more enthusiastic and hardworking people!! And also just for bigger attendance of all events like Bible talks and studies.

## Conferences / Events

List 3 strategically important reoccurring or one-off conferences / events you run for your campus group.

Event Name	Why this event is important to your campus group
MYC	While this is an AFESWA event, our campus group attends and it is probably the most significant event in our year. It's a great chance to consolidate our members and encourage them on the mission and incorporate them into our group by establishing relationships.
O-Day	This event is important because it is key for us to meet first years and advertise our club being on campus. Allows us to efficiently reach a lot of people on campus when FY and international students are first checking out the campus and clubs. Also a great chance to evangelise and give CUers an opportunity to share their faith
Mark Drama	We ran two Mark Drama performances this year in conjunction with the regional Meet Jesus event. These were a great success with over 300 people coming across the two events, a few from other universities in WA as well. This was a great chance for our regulars to invite a friend to something that was a little left-field. Nearly everyone one I spoke to had invited someone from our 100 or so regular members, which was really encouraging.
MYC/AnCon Attendance	80

## About your Campus

As we think about the AFES mission in terms of evangelise, encourage, train and send, write one or two sentences about the strengths, weaknesses and opportunities of each of these areas.



### Strengths, Weaknesses and Opportunities:

<b>Evangelise</b>	Evangelism was a real strength of our campus this year, with lots of evangelistic events with good turn-outs as well as many people involved in walk-up and stall. A weakness is our fringe of people who came to find out about Christ fluctuated greatly throughout the year, so an opportunity is there for long term evangelistic effort towards those people.
<b>Encourage</b>	Encouragement on our campus has been very high this year, especially around Meet Jesus and encouraging people to invite their friends. We also launched a novelty WhatsApp group called BePrayer, where a daily reminder is sent out to pray 24/7, which has been really encouraging and pushed prayer greatly on our campus
<b>Train</b>	The training offering on our campus has been fairly standard this year, but numbers have been a little bit down. This provides an opportunity for a greater push in training, but the threat is significant in that a lack of student engagement with "formal" training like Equip runs against the mission, as well as a change in staff worker in charge of training is a major threat in this area
<b>Send</b>	Send has been pushed in the background at our campus in areas like Ministry Info dinners, as well as tapping on the shoulder for certain students to step into areas that would be beneficial in giving them training opportunities to allow them to be sent and serve the gospel once they've finished at university

**What are the main ways your group evangelise on campus?**

A weekly stall in the general food area

Walk up evangelise (a team of students is heavily involved in this and does it weekly)

Evangelistic events

ODay

**As a group, what are you finding tough?**

Availability of students and many not being on campus for long beyond class, reduces our ability to evangelise, as well as having a seemingly spread out campus where it is hard to reach all of the different areas that are outside our normal area consistently

**If known, what are some your plans for 2025?**

To continue in things like our weekly stall and evang team, the incoming committee will be deciding on more specific events at the end of the year

**How does your group use AFES *PrayerNet* to pray for other groups?**

Our group doesn;t utilise PrayerNet to a great degree

**How can we pray for you?**

To make the transition in senior staff changeover smooth, as well as to continue in the upwards trends in prayerfulness and evangelistic hearts in our CUers