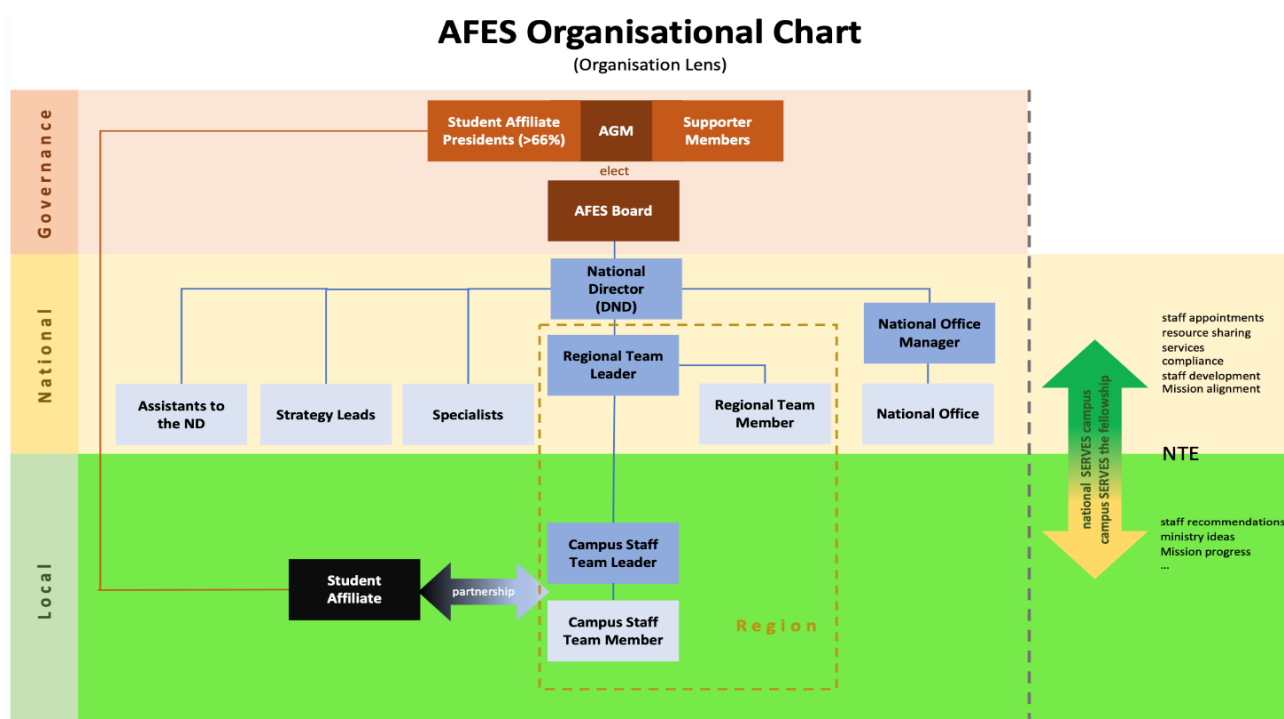


AFES Organisation Chart and Supervision Framework



1. AFES is best understood as a **movement**, a **fellowship** and an **organisation**.
 - We exist as a part of a grass roots **movement** - including those within and without AFES and its affiliates to advance the gospel of Christ.
 - Within that movement, we exist as a **fellowship** - in self-sacrificing conformity to a shared vision - choosing to partner together as AFES toward our Mission, Vision and Values.
 - The AFES **organisation**, outlined above, provides supporting structures, guidelines, frameworks and policies to help that fellowship flourish and the movement grow - for the good of all and the glory of Christ.
2. Student Affiliate Presidents make up the voting majority of the AFES organisation and AGM.¹
3. AFES Governance and AFES National Staff and resources exist to serve local affiliated University Christian clubs.
4. AFES staff are deployed to those clubs, serving together with students and student leaders to partner in the campus mission. It is this campus mission which is our shared priority.

¹ They, along with elected supporter members, elect the AFES Board. The AFES Board appoints the AFES National Director. The AFES National Director (and Deputy National Director) supervise the AFES Regional Team Leaders, who in turn supervise AFES Campus Staff Team Leaders, who supervise AFES Campus Staff Team Members.